



# OUR HOUSES

GRANADA



SEVILLA



CÓRDOBA




# SEVILLA MODEL

 x2 BEDROOMS

 x2 BATHROOMS

 150 M<sup>2</sup> PLOT

 70 M<sup>2</sup> LIVING

 186.300



# SEVILLA

*Modern semi-detached villa providing exceptional comfort at a competitive price.*

“Cozy and sustainable. Our Seville model is a compact yet comfortable solution to the growing demand. Designed for couples or small families.”

Solarium of 44 m<sup>2</sup> with 15,5 m<sup>2</sup> reserved for solar panels.  
Private parking spot and pool.





# GRANADA MODEL

 x 3 BEDROOMS

 x 2 BATHROOMS

 200 M<sup>2</sup> PLOT

 94 M<sup>2</sup> LIVING

€ 249.780





# GRANADA

*Mid-sized detached villa. Harmony and functionality in every corner.*

“Our Granada model is perfect for growing families, offering space and style. The spacious solarium above invites you to soak up the ever-present Murcian sun.”


Solarium of 62 m<sup>2</sup> with 17,6 m<sup>2</sup> reserved for solar panels.  
Private parking spot and pool.







# CÓRDOBA MODEL

 x 3 BEDROOMS

 x 3 BATHROOMS

 300 M<sup>2</sup> PLOT

 144 M<sup>2</sup> LIVING

 379.845





# CÓRDOBA

*Large detached villa. Luxury and freedom.*

“The Córdoba model, our flagship product, offers the ultimate experience for family life with no compromise.”

Solarium of 99,5 m<sup>2</sup>.

It features a private pool and covered garage with a 22,8 m<sup>2</sup> roof, perfect for solar panels.

Note: Floor plans and renders are currently being updated to include the fourth bathroom, located within the stairwell and accessible from the pool area.



# OUR FLATS

CÁDIZ

ALMERÍA

RONDA





# ALMERÍA

*Charming flat with solarium.*


 x2 BEDROOMS

This cozy flat, located above a shop, features a dedicated private entrance and a spacious solarium.

 x2 BATHROOMS

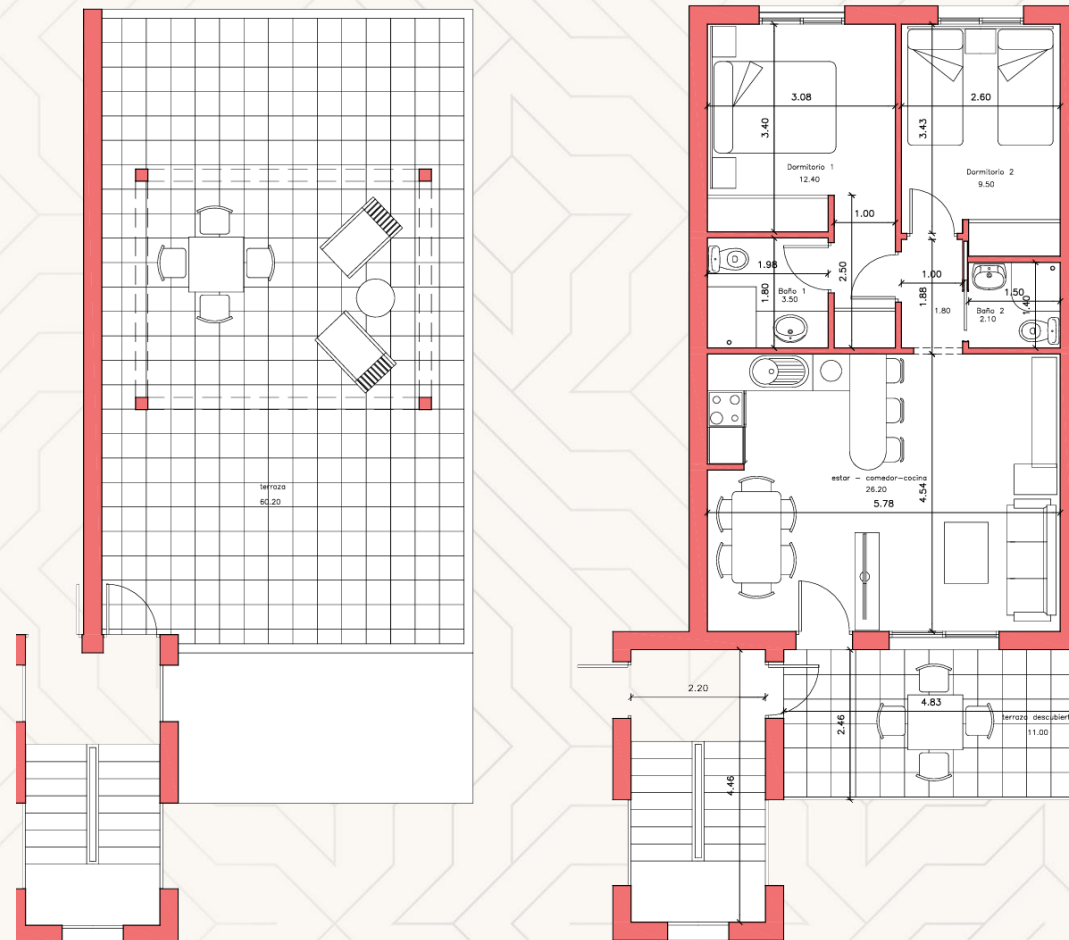
Solarium of 60,2 m<sup>2</sup> with a 11 m<sup>2</sup> terrace.

 72 M<sup>2</sup> PLOT

 72 M<sup>2</sup> LIVING

No integrated parking spot or pool.

 164,627.10





# CÁDIZ

*Flat with private entrance and solarium.*

 x2 BEDROOMS

This flat, located above a Ronda unit, features a dedicated entrance and a spacious solarium.


 x2 BATHROOMS

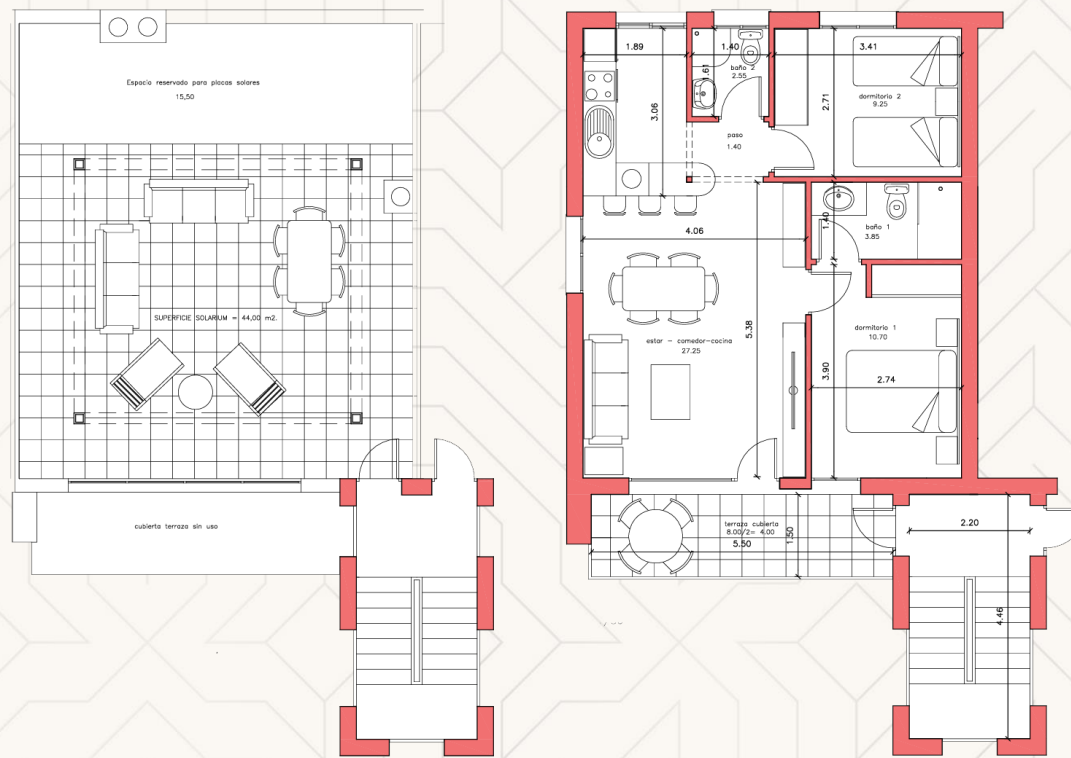
 70 M<sup>2</sup> PLOT

Solarium of 44 m<sup>2</sup>.

 70 M<sup>2</sup> LIVING

No integrated parking spot or pool.

 159,390.00






# RONDA

*Ground-level flat with private parking.*

 x2 BEDROOMS

 x2 BATHROOMS

 FROM 115 M<sup>2</sup> PLOT

 70 M<sup>2</sup> LIVING

FROM €169,119.00

This ground-level flat offers a dedicated parking spot and a generous plot, providing ample outdoor space.

Situated beneath a Cádiz model unit.

No solarium or pool.

