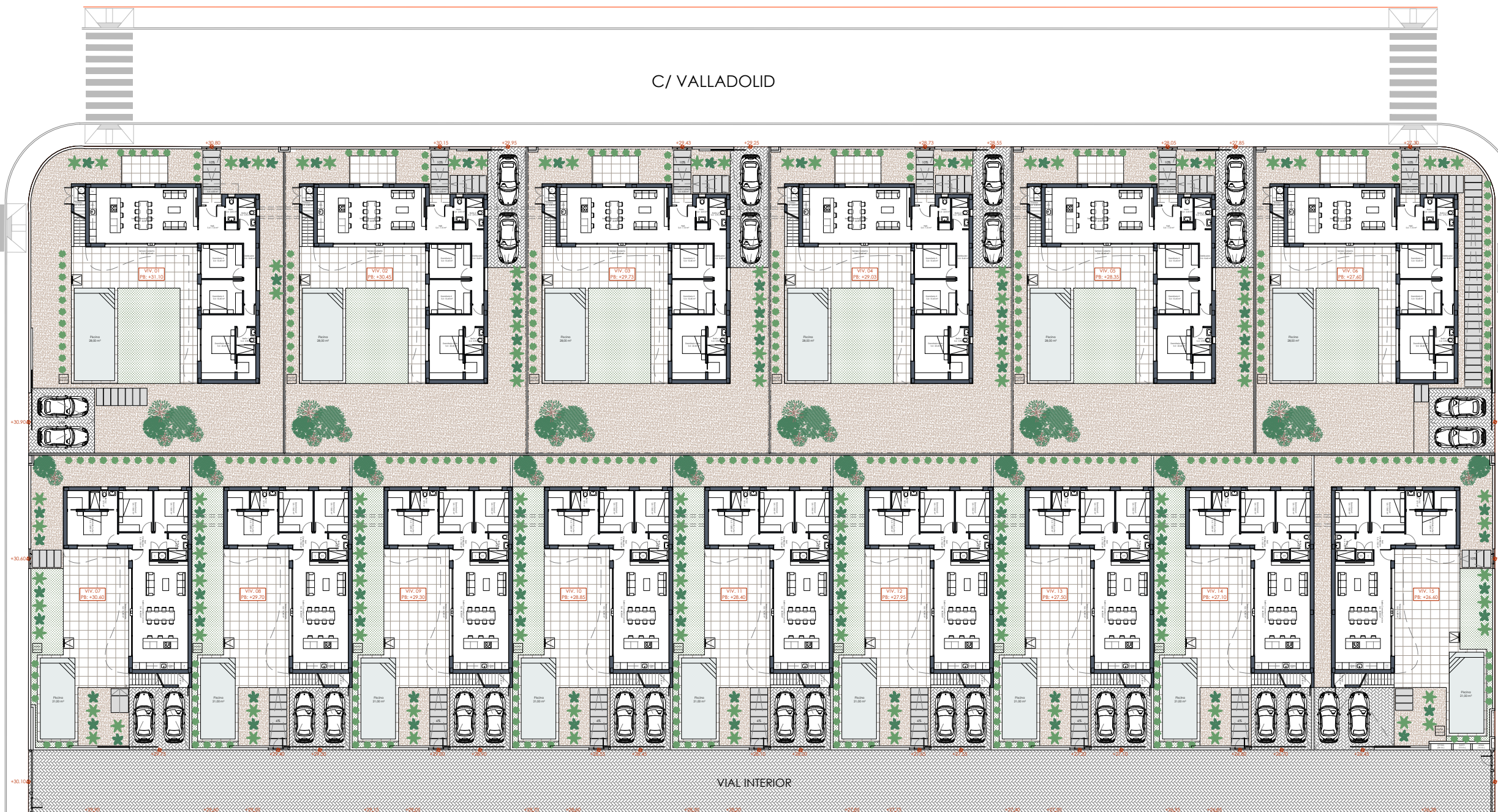


C/ VALLADOLID

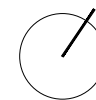
AVDA. JORGE MARTÍNEZ "ASPAR"

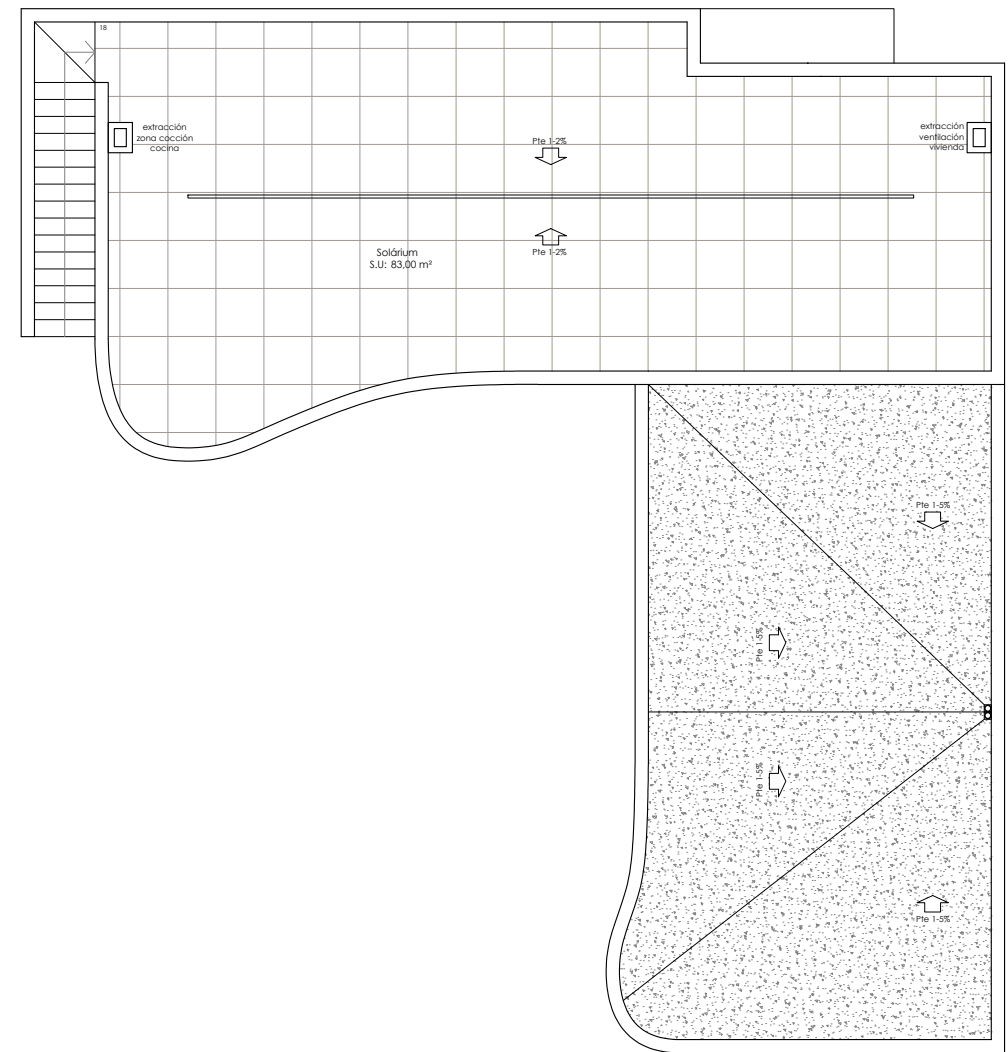
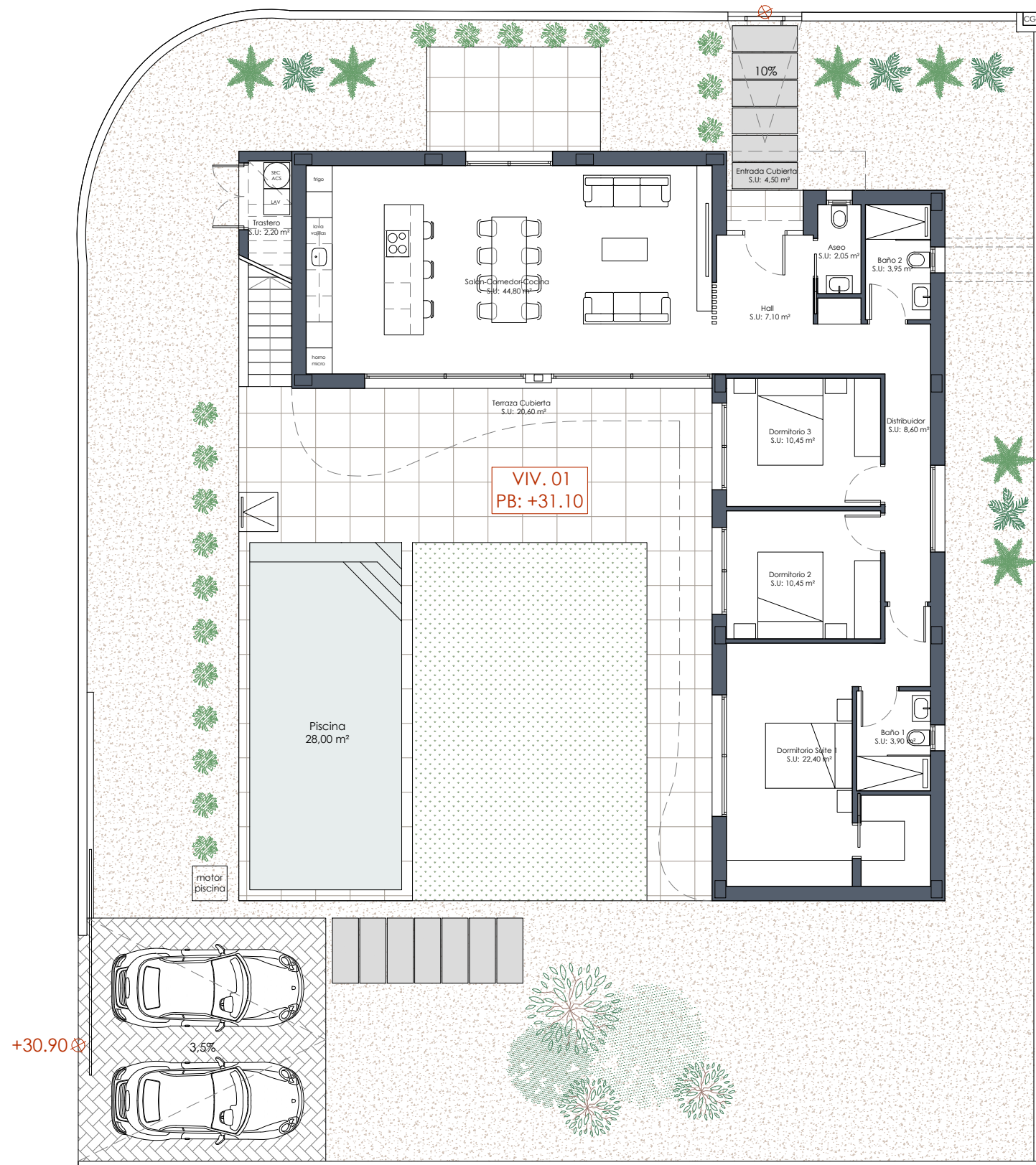
AVDA. JEREZ DE LA FRONTERA

VIAL INTERIOR

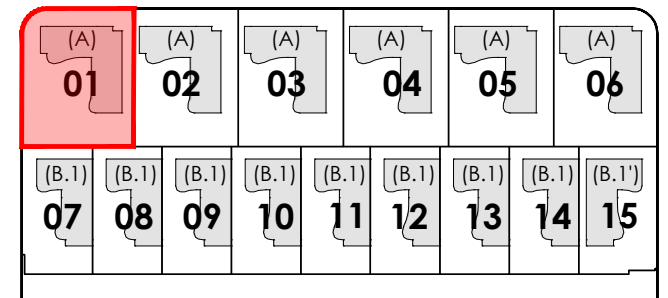


15 VIVIENDAS UNIFAMILIARES - Lo Marabú



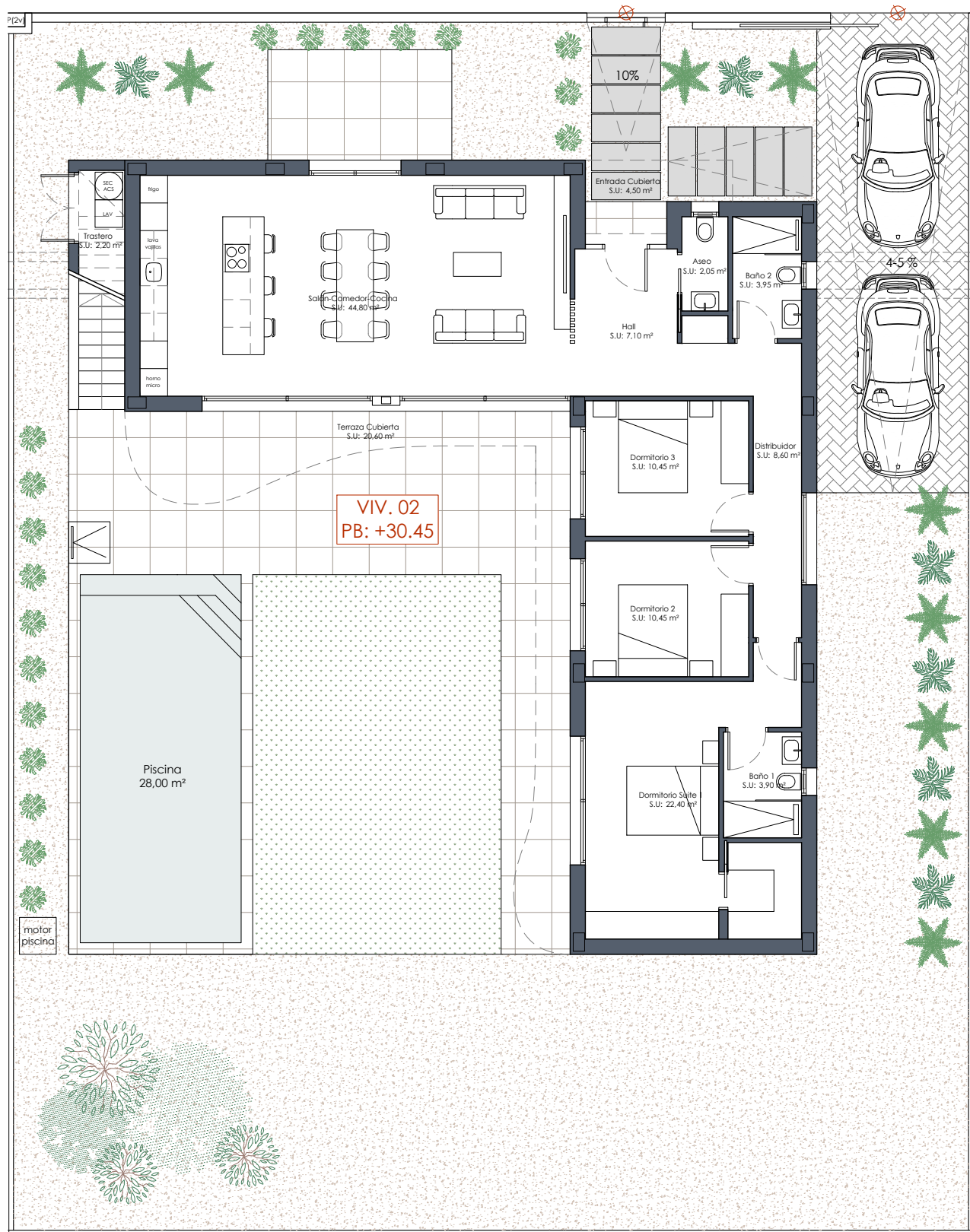


Vivienda 1	
Sup. Parcela	606,68 m2
Sup. Construida P. Baja	145,80 m2
Sup. Construida P. Terraza	25,10 m2
Sup. Construida P. Solarium	83,00 m2
Sup. Construida TOTAL	253,90 m2
Sup. Piscina	3,5x8 m

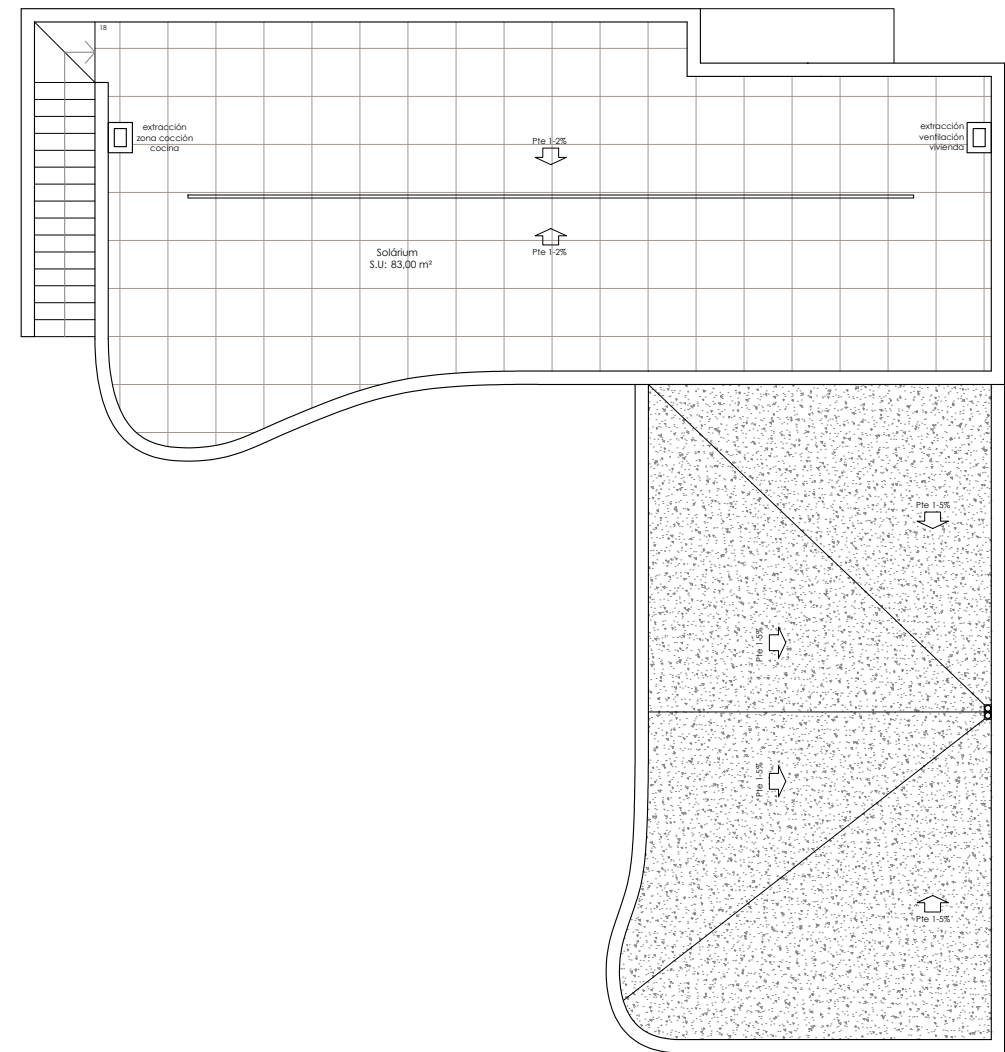


15 VIVIENDAS UNIFAMILIARES - Lo Marabú

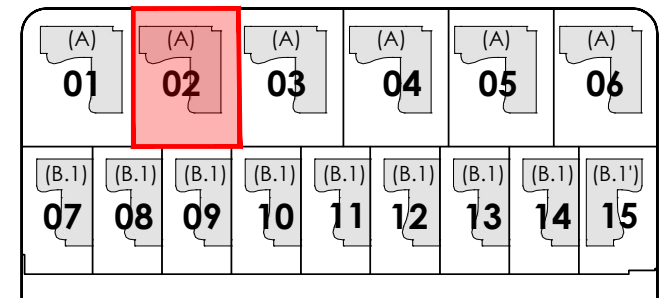


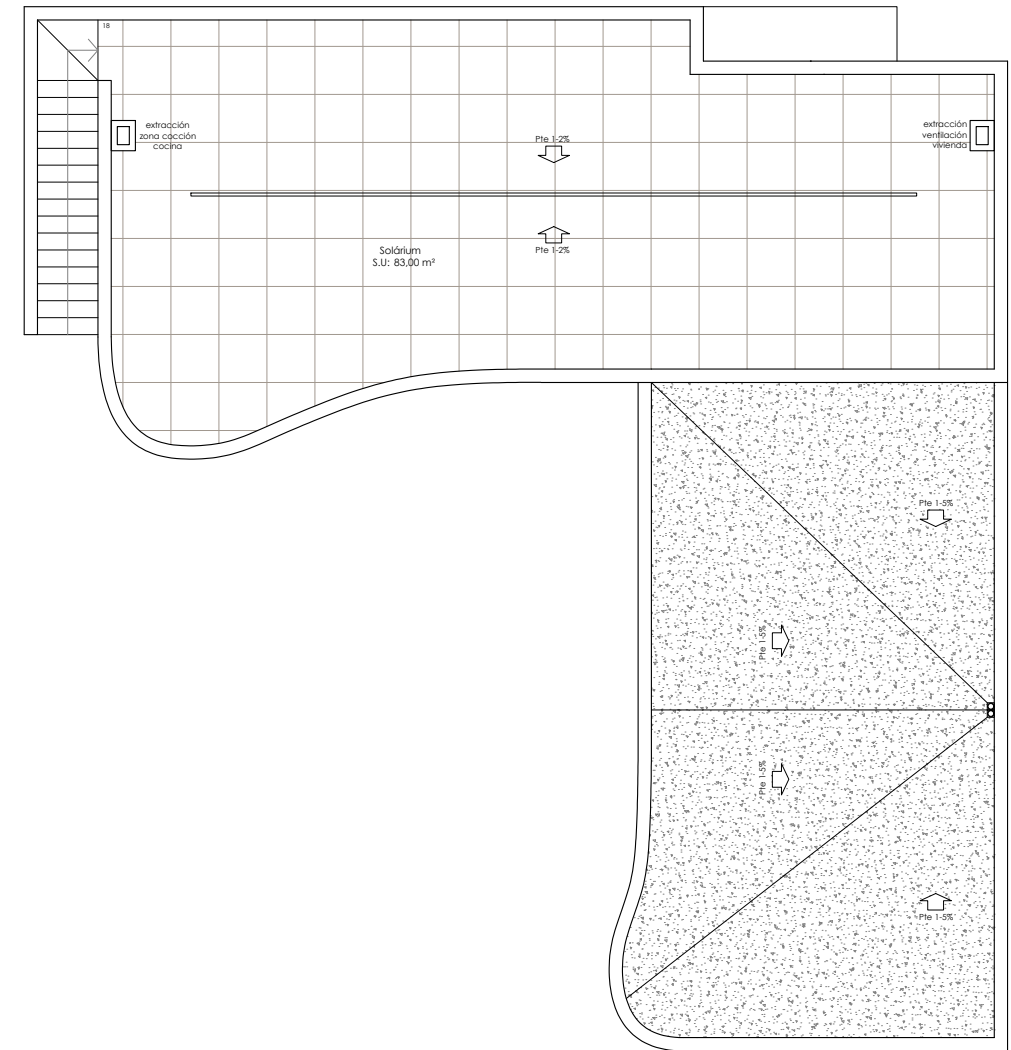
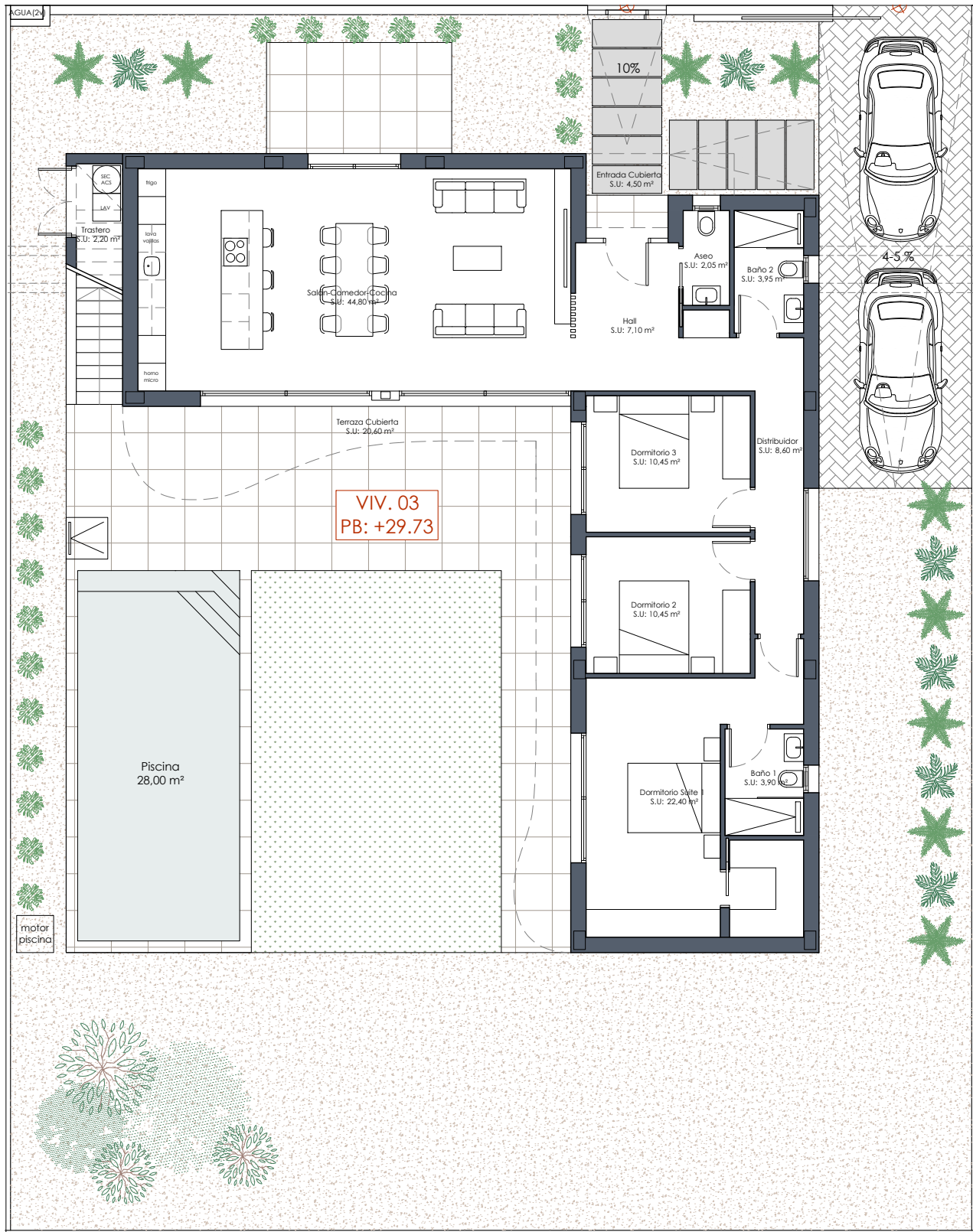


VIV. 02
PB: +30.45



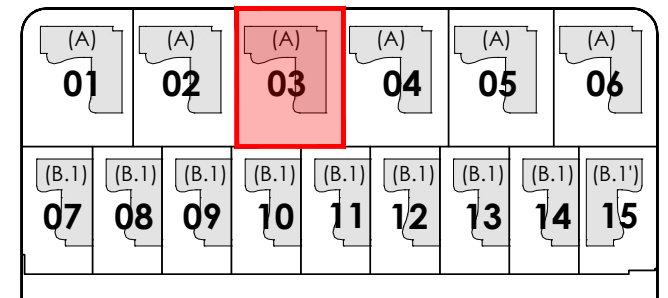
Vivienda 2	
Sup. Parcela	576,75 m ²
Sup. Construida P. Baja	145,80 m ²
Sup. Construida P. Terraza	25,10 m ²
Sup. Construida P. Solarium	83,00 m ²
Sup. Construida TOTAL	253,90 m ²
Sup. Piscina	3,5x8 m

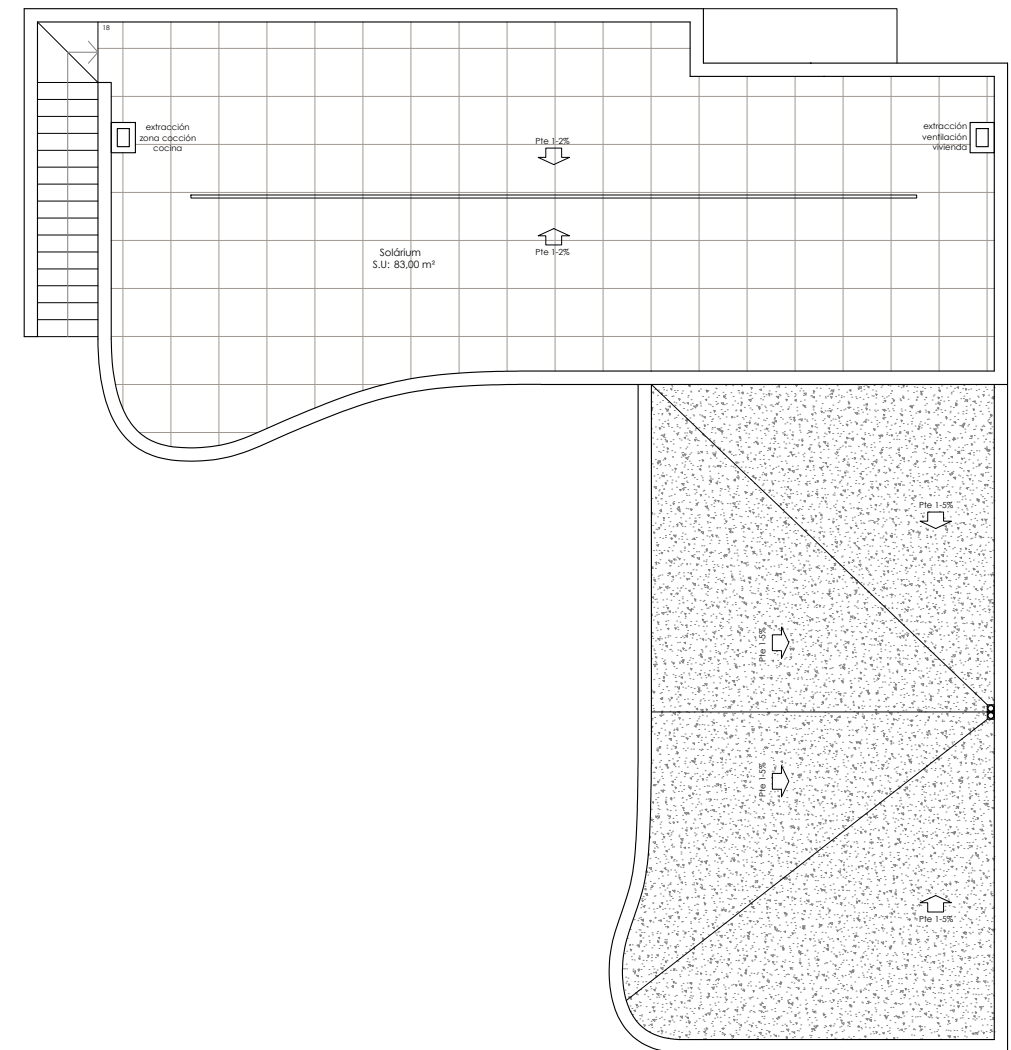
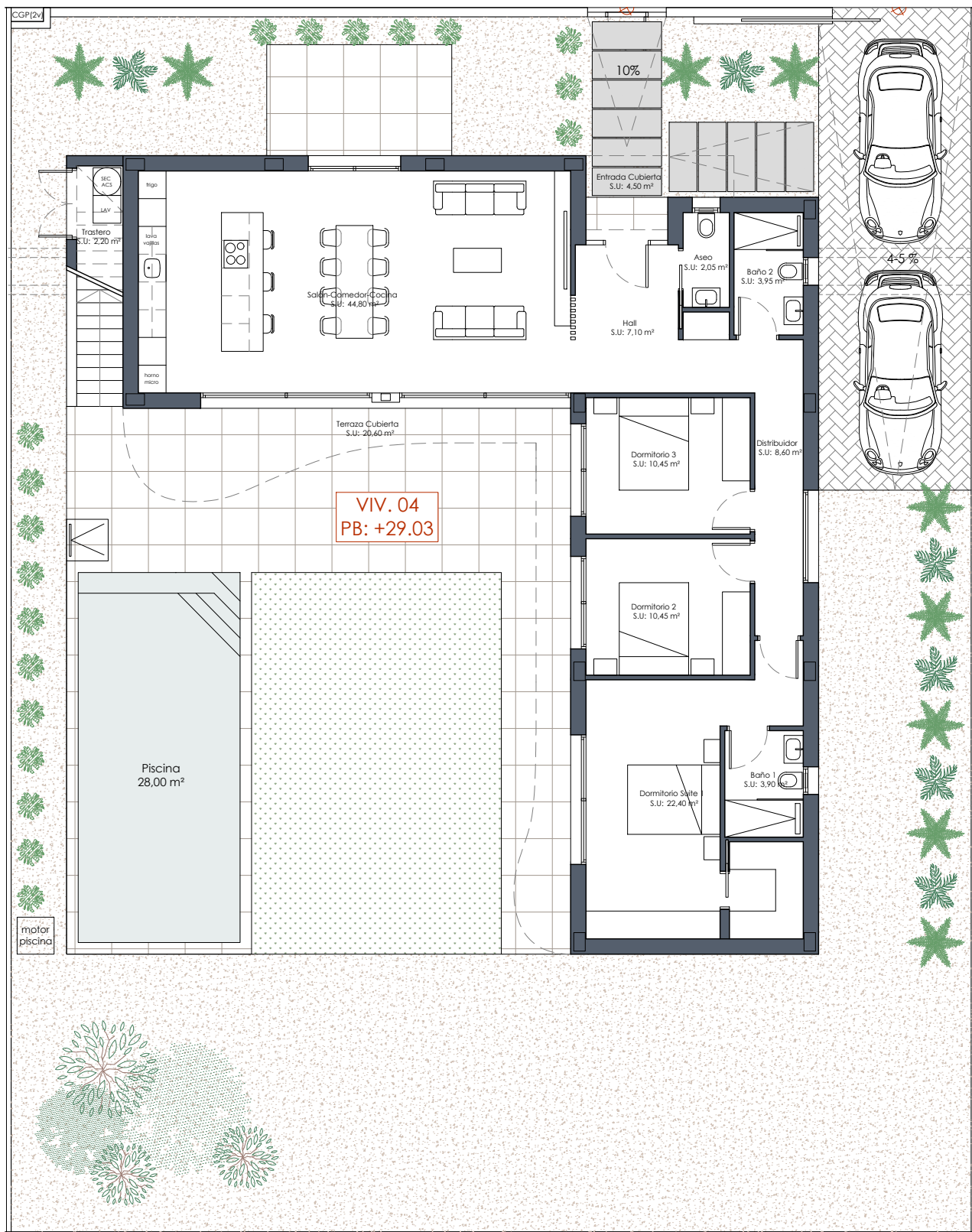




Vivienda 3

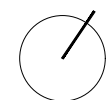
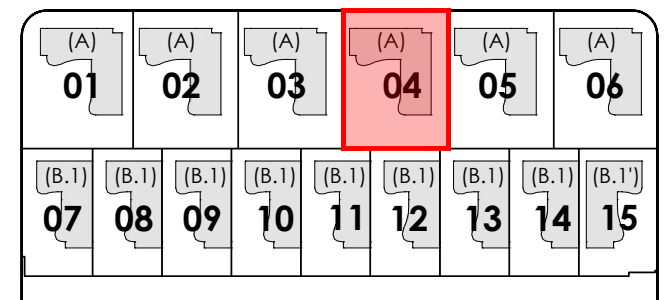
Sup. Parcela	576,77 m2
Sup. Construida P. Baja	145,80 m2
Sup. Construida P. Terraza	25,10 m2
Sup. Construida P. Solarium	83,00 m2
Sup. Construida TOTAL	253,90 m2
Sup. Piscina	3,5x8 m

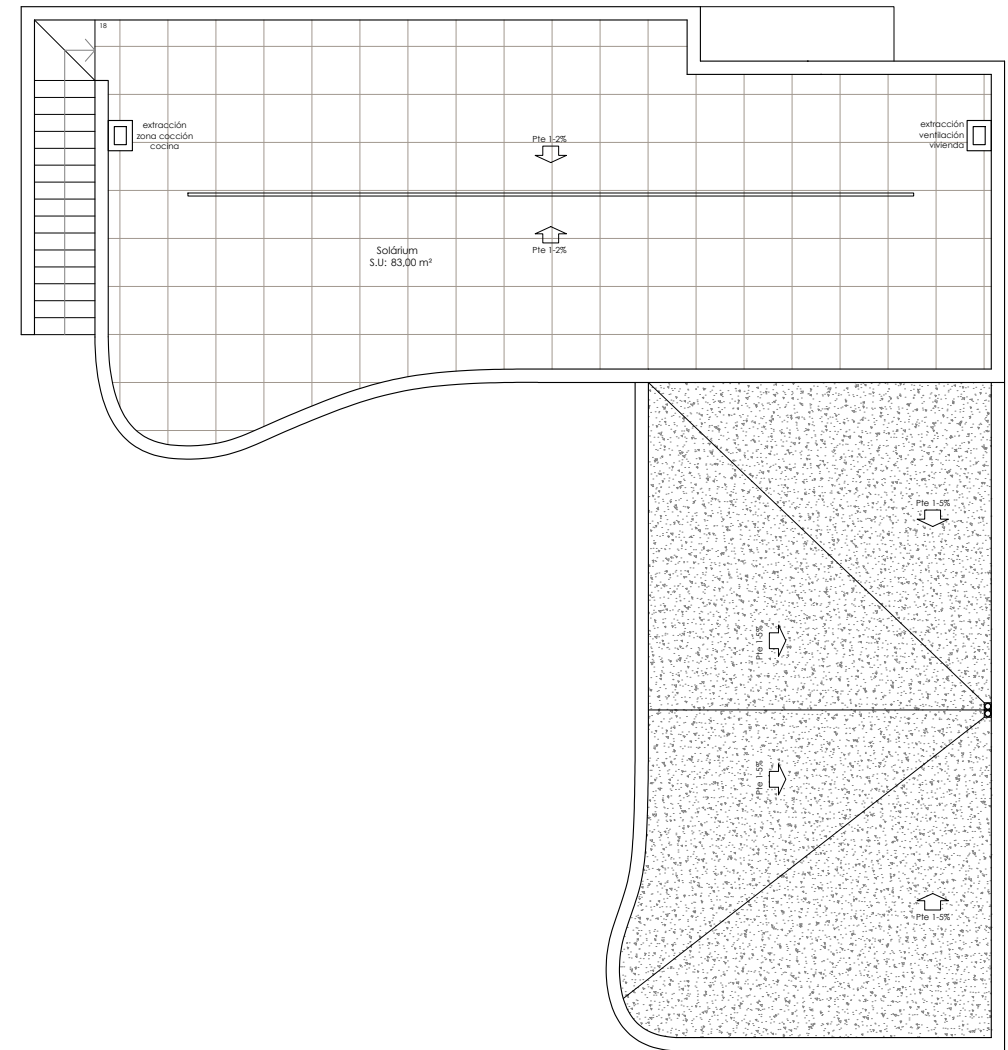
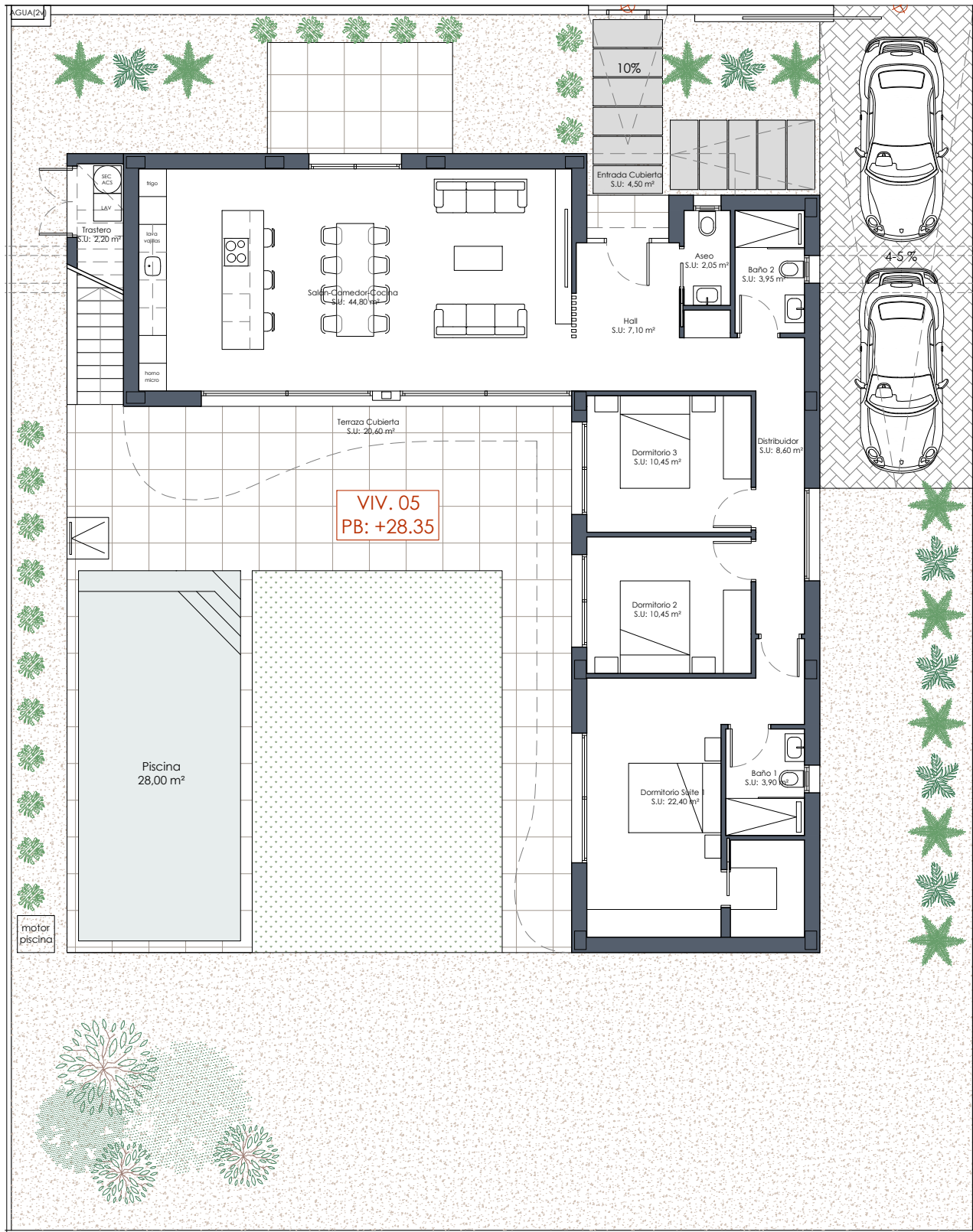




Vivienda 4

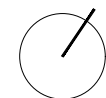
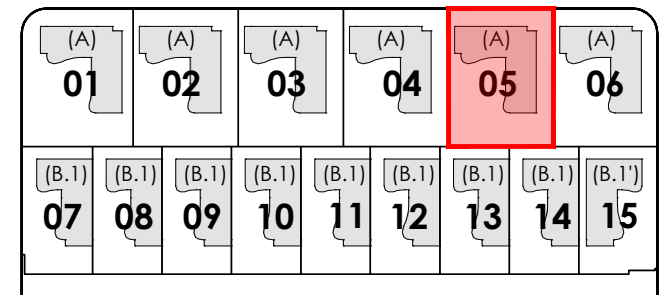
Sup. Parcela	576,78 m ²
Sup. Construida P. Baja	145,80 m ²
Sup. Construida P. Terraza	25,10 m ²
Sup. Construida P. Solarium	83,00 m ²
Sup. Construida TOTAL	253,90 m ²
Sup. Piscina	3,5x8 m

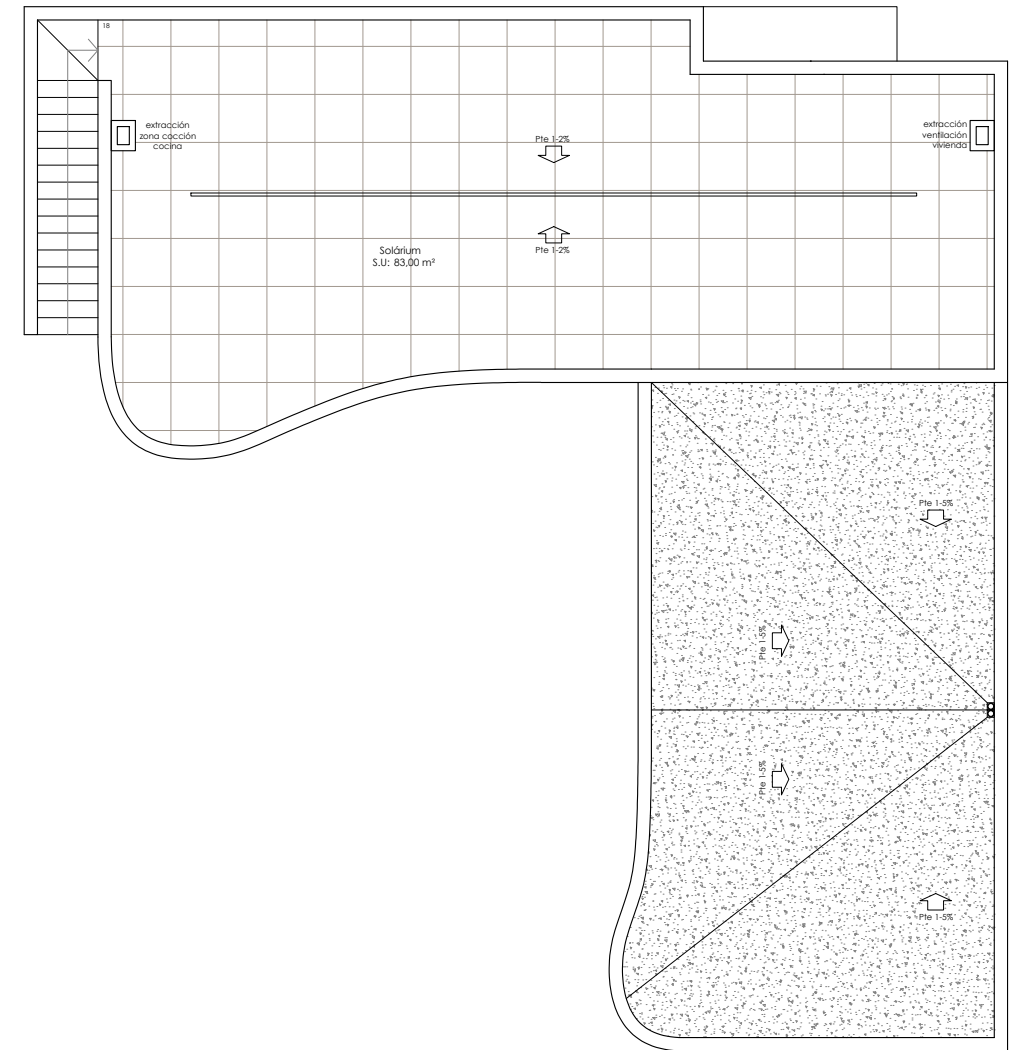
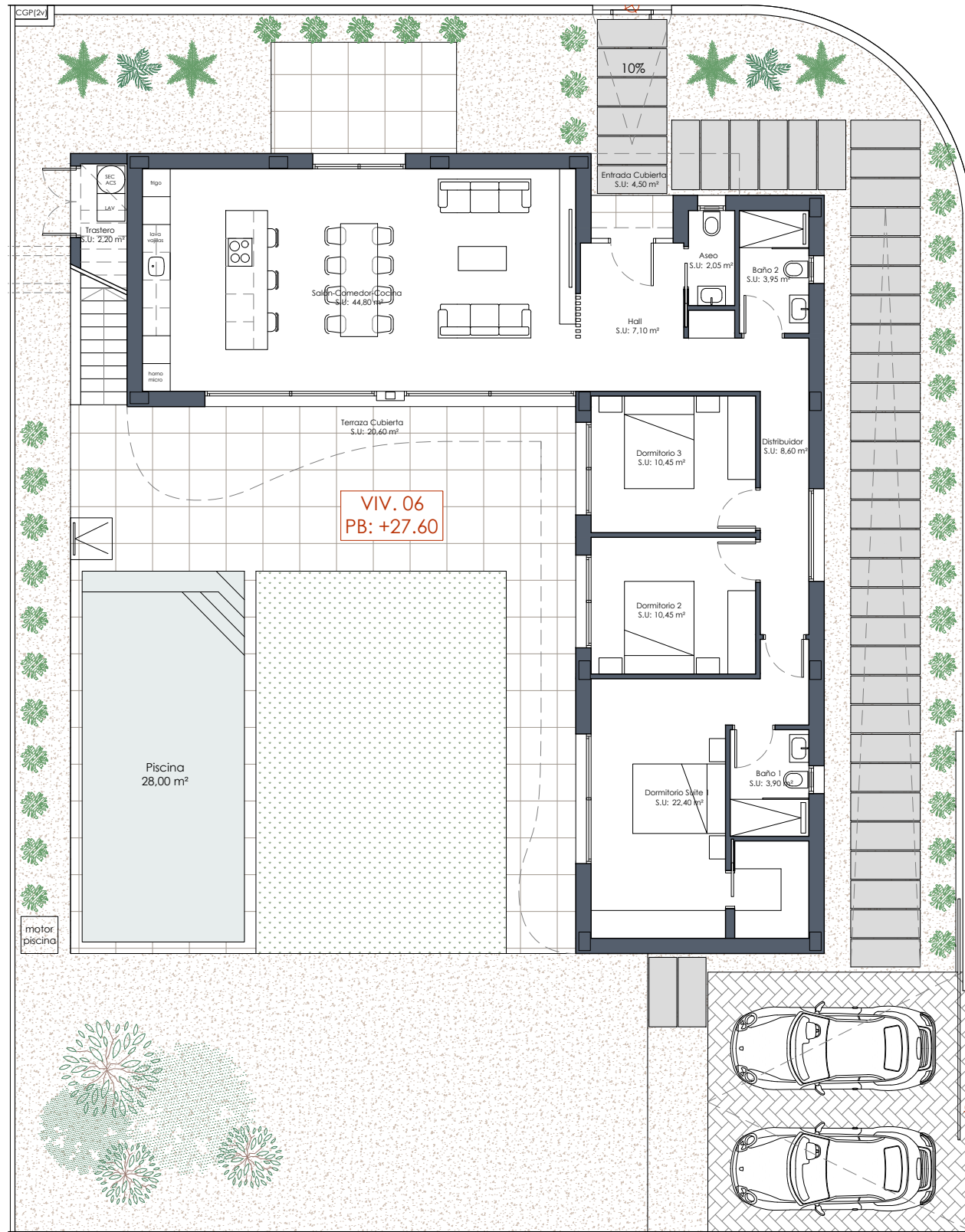




Vivienda 5

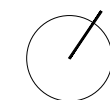
Sup. Parcela	576,80 m ²
Sup. Construida P. Baja	145,80 m ²
Sup. Construida P. Terraza	25,10 m ²
Sup. Construida P. Solarium	83,00 m ²
Sup. Construida TOTAL	253,90 m ²
Sup. Piscina	3,5x8 m

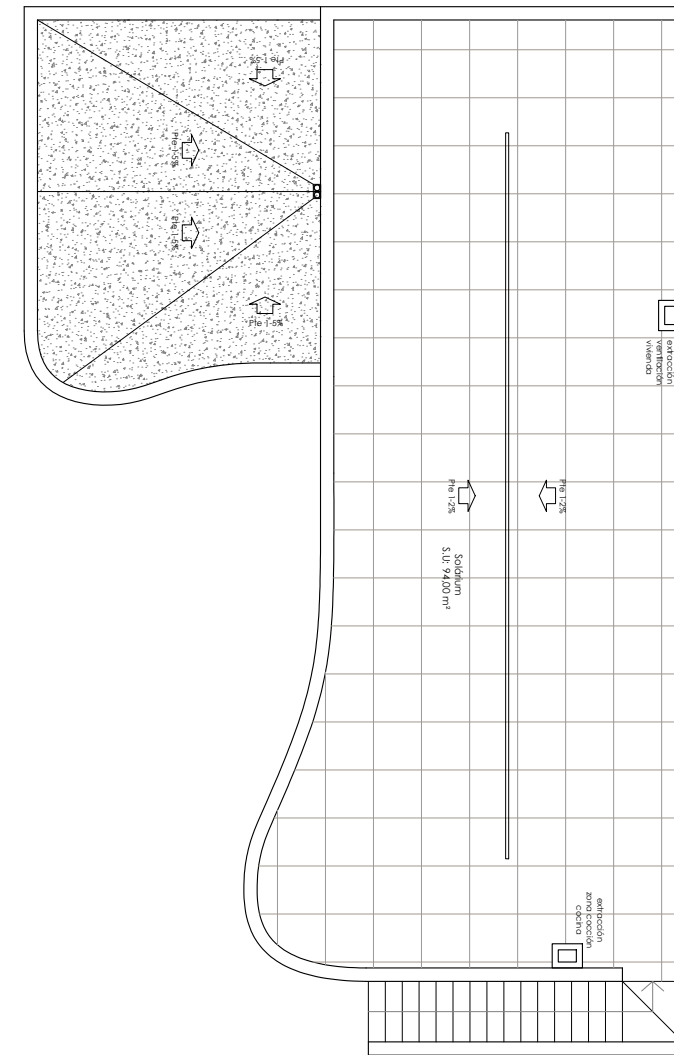
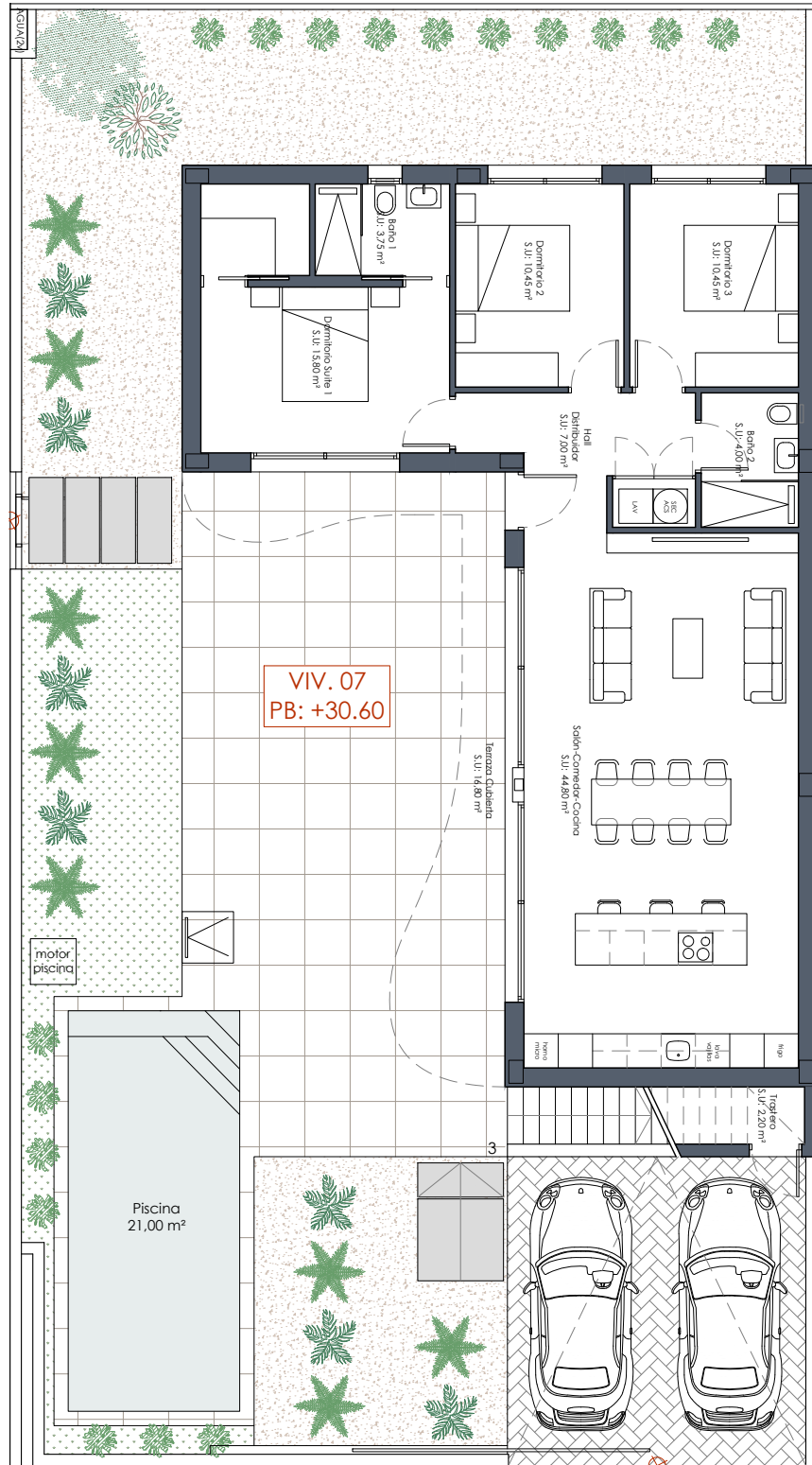




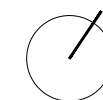
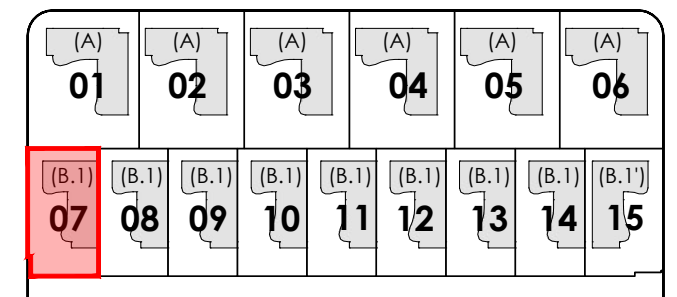
Vivienda 6	
Sup. Parcela	562,80 m2
Sup. Construida P. Baja	145,80 m2
Sup. Construida P. Terraza	25,10 m2
Sup. Construida P. Solarium	83,00 m2
Sup. Construida TOTAL	253,90 m2
Sup. Piscina	3,5x8 m

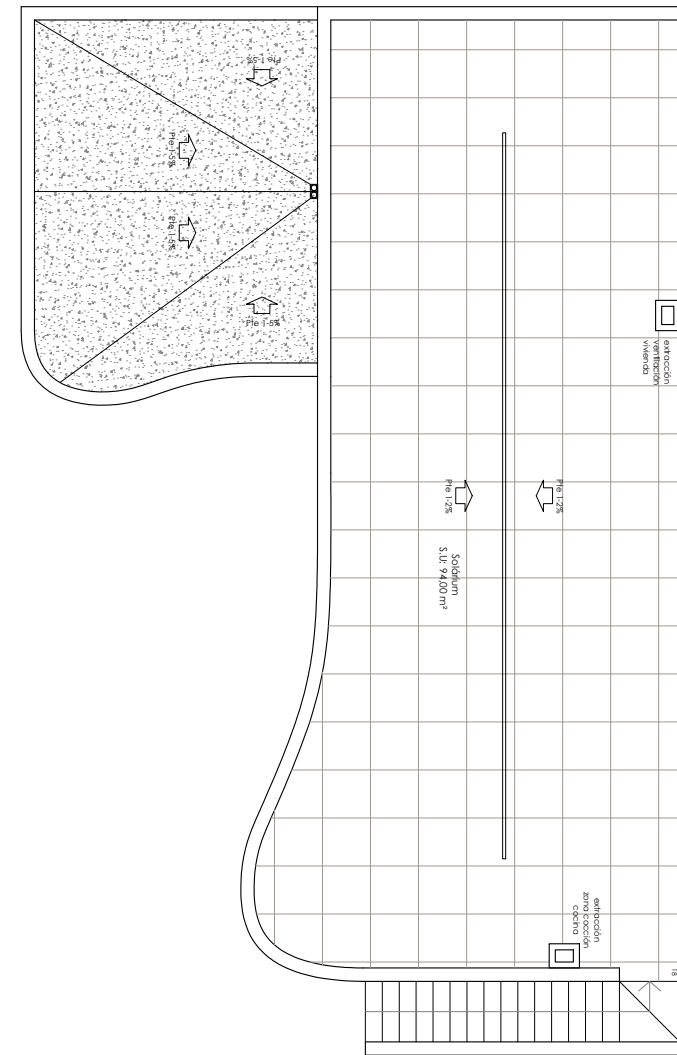
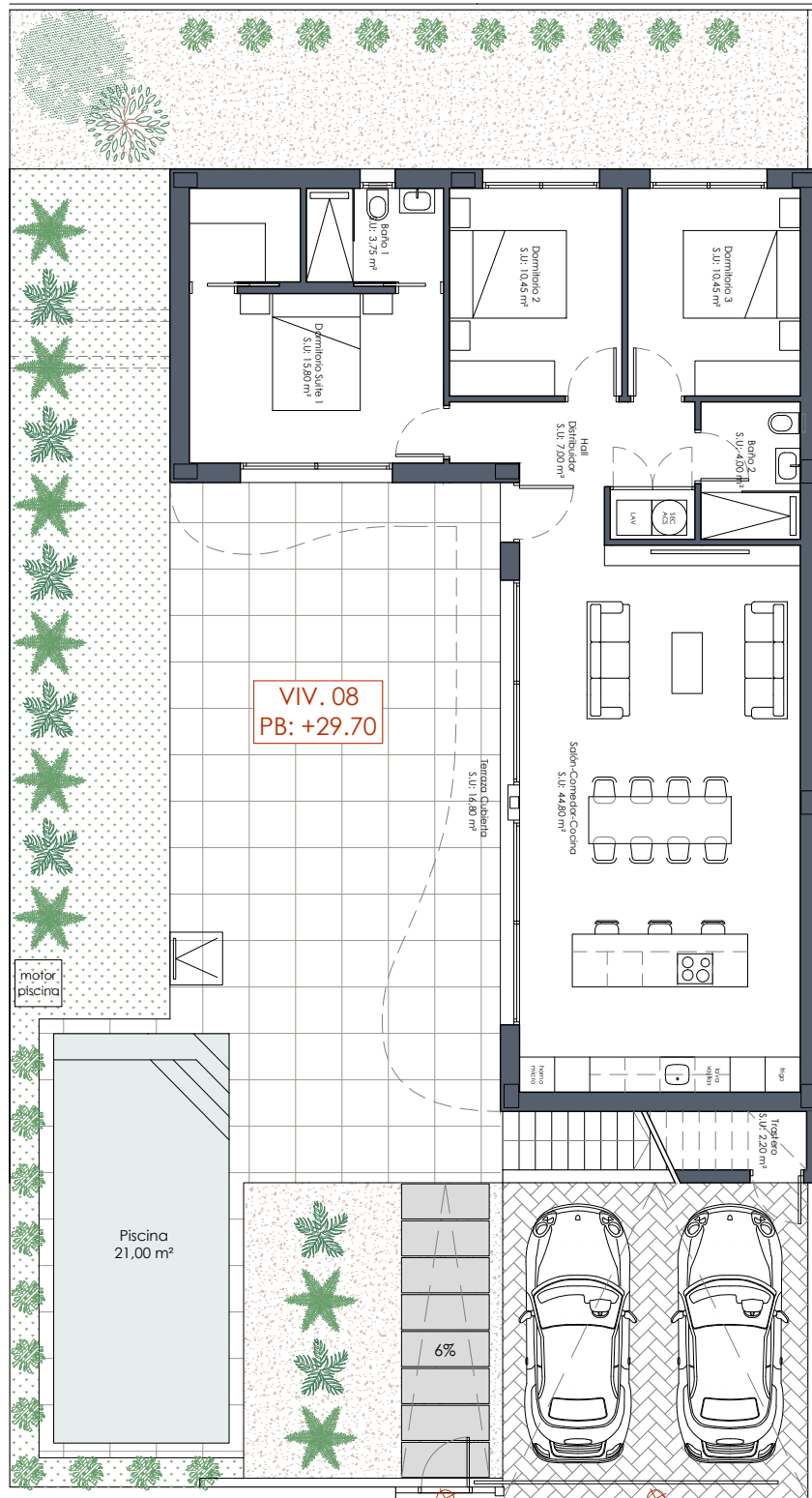
(A)	(A)	(A)	(A)	(A)	(A)	(A)	(A)	(A)
01	02	03	04	05	06	07	08	09
(B.1)	(B.1)	(B.1)	(B.1)	(B.1)	(B.1)	(B.1)	(B.1)	(B.1)
10	11	12	13	14	15			



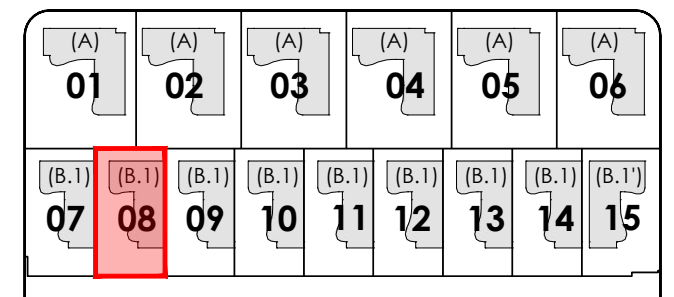


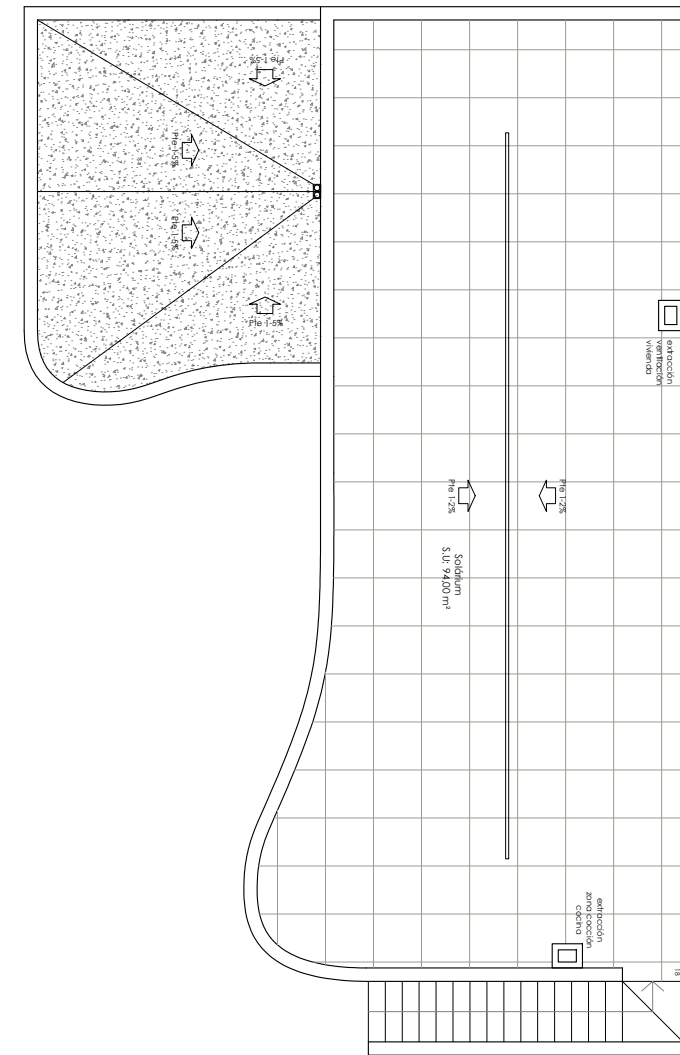
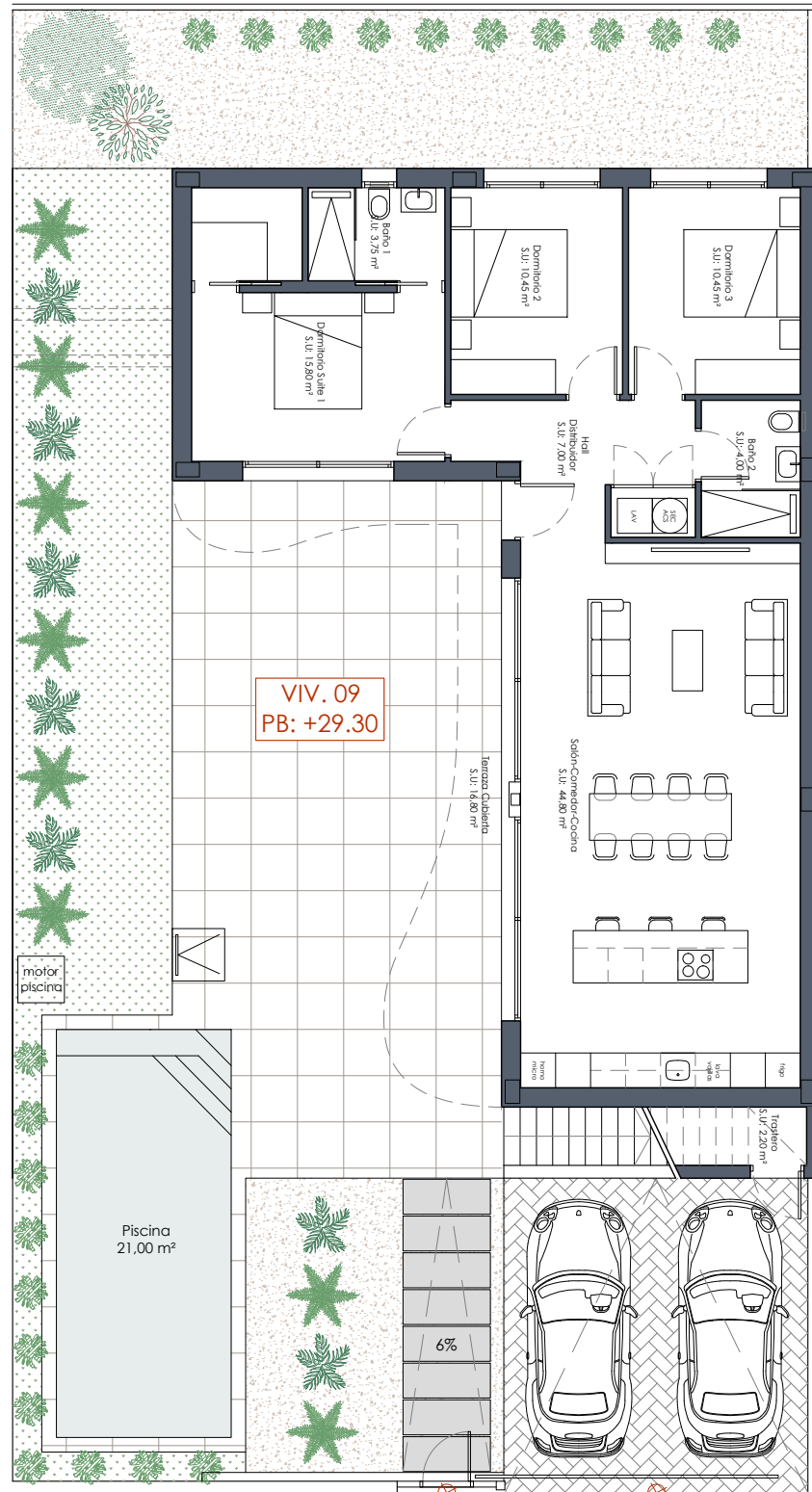
Vivienda 7	
Sup. Parcela	357,34 m ²
Sup. Construida P. Baja	124,85 m ²
Sup. Construida P. Terraza	16,80 m ²
Sup. Construida P. Solarium	94,00 m ²
Sup. Construida TOTAL	235,65 m ²
Sup. Piscina	3x7 m



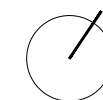
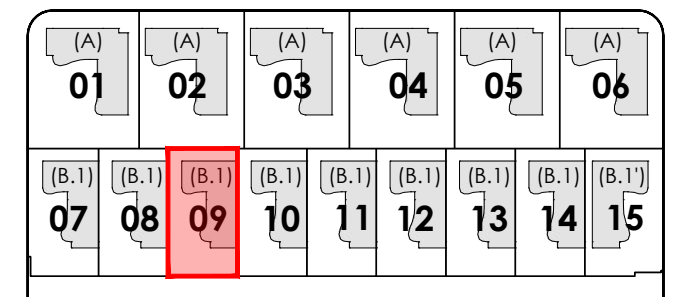


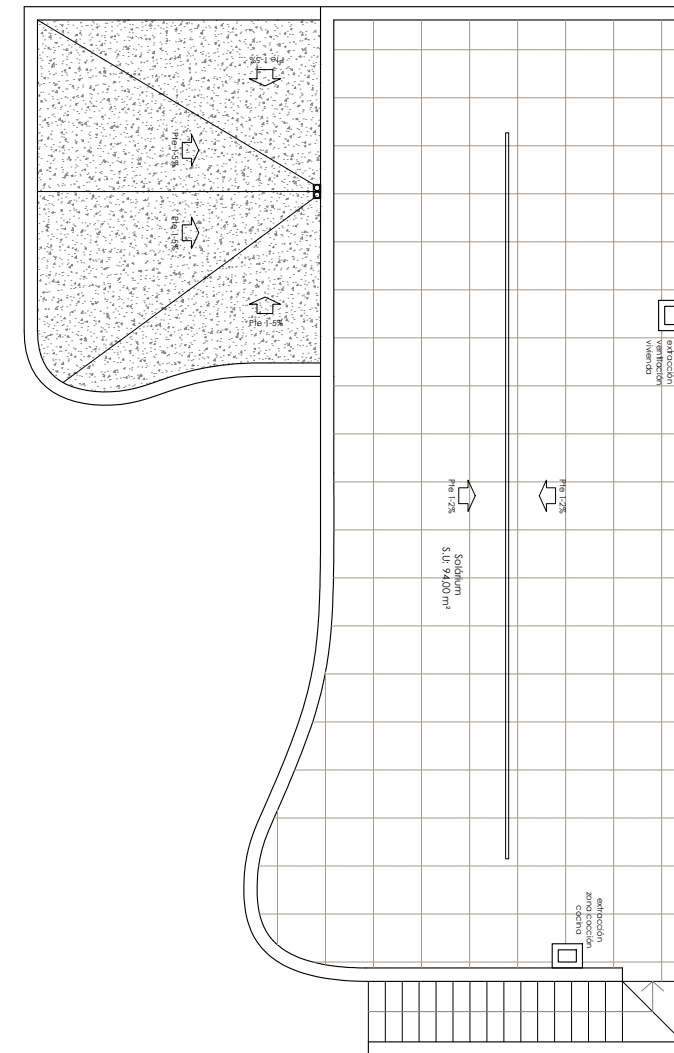
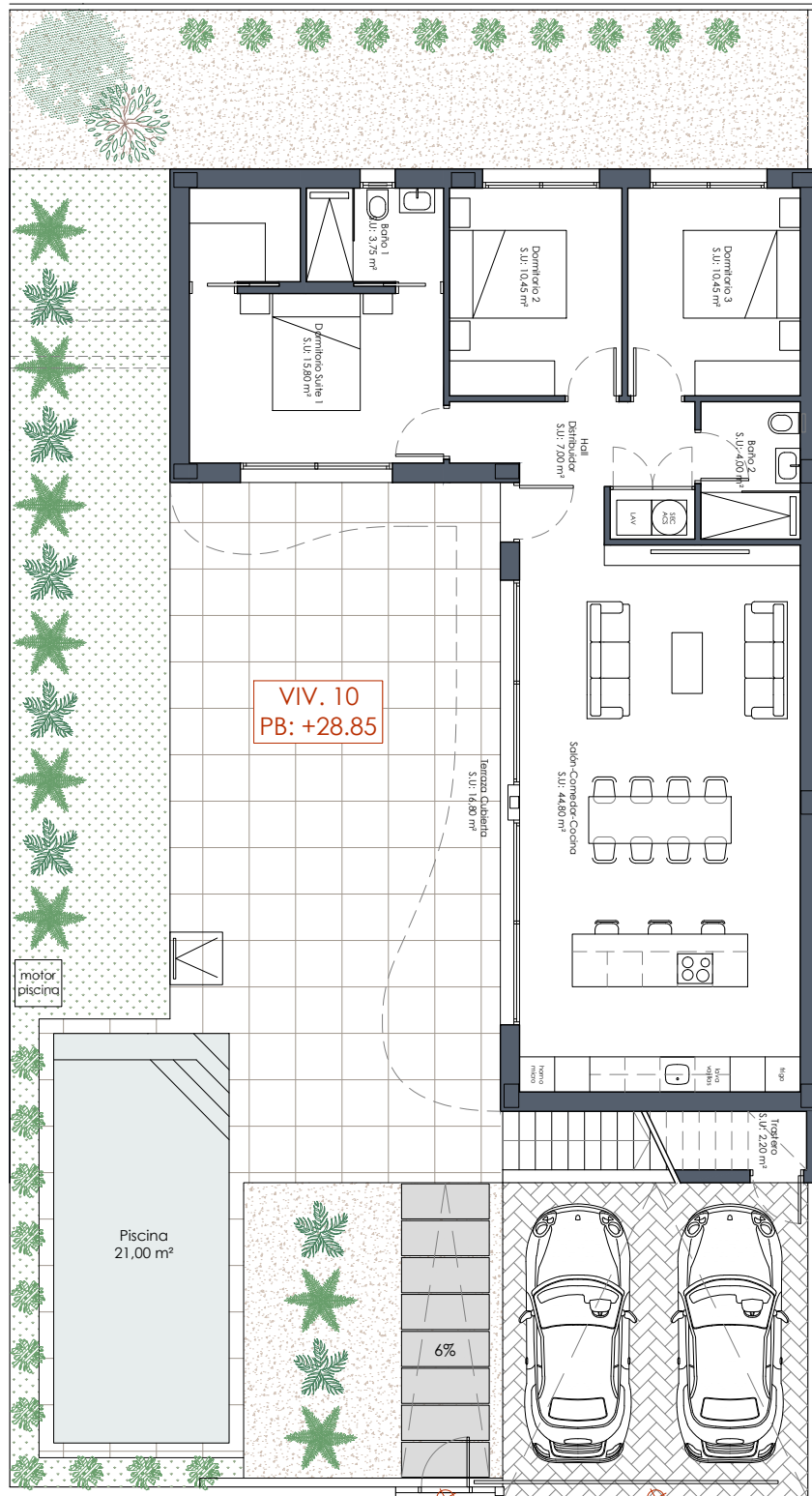
Vivienda 8	
Sup. Parcela	352,49 m2
Sup. Construida P. Baja	124,85 m2
Sup. Construida P. Terraza	16,80 m2
Sup. Construida P. Solarium	94,00 m2
Sup. Construida TOTAL	235,65 m2
Sup. Piscina	3x7 m



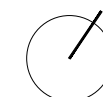
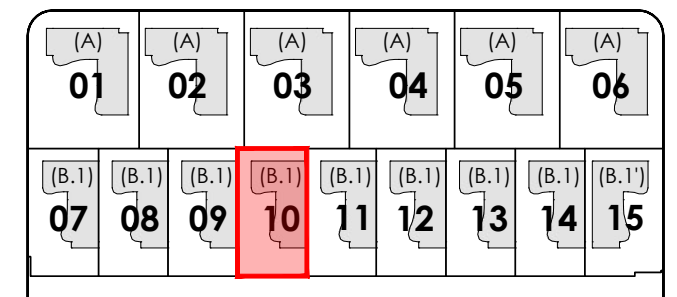


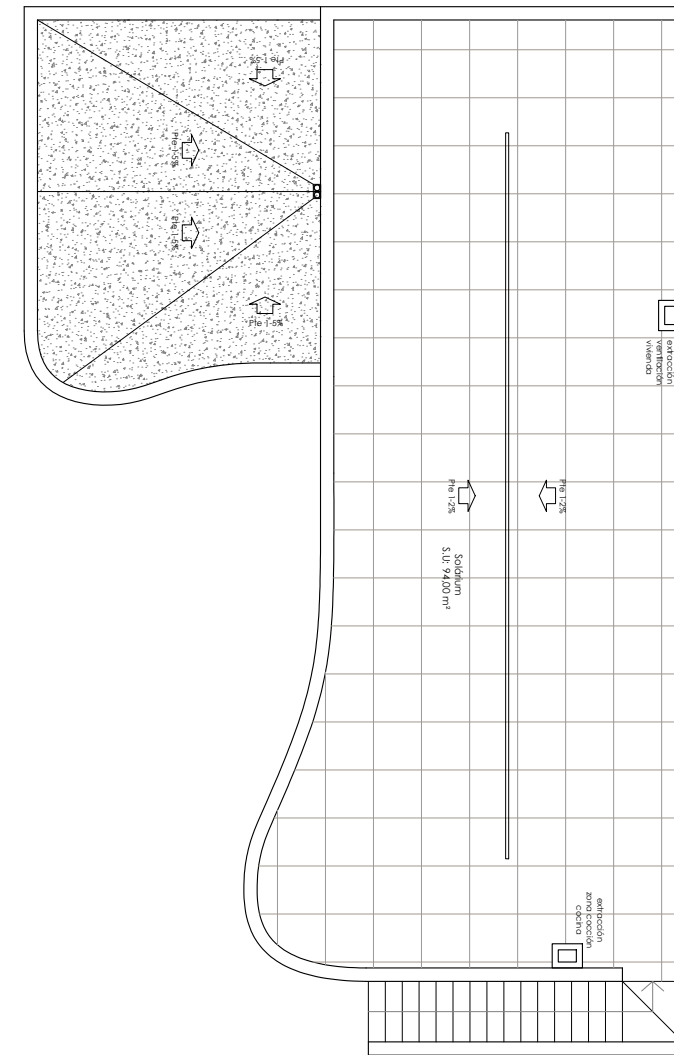
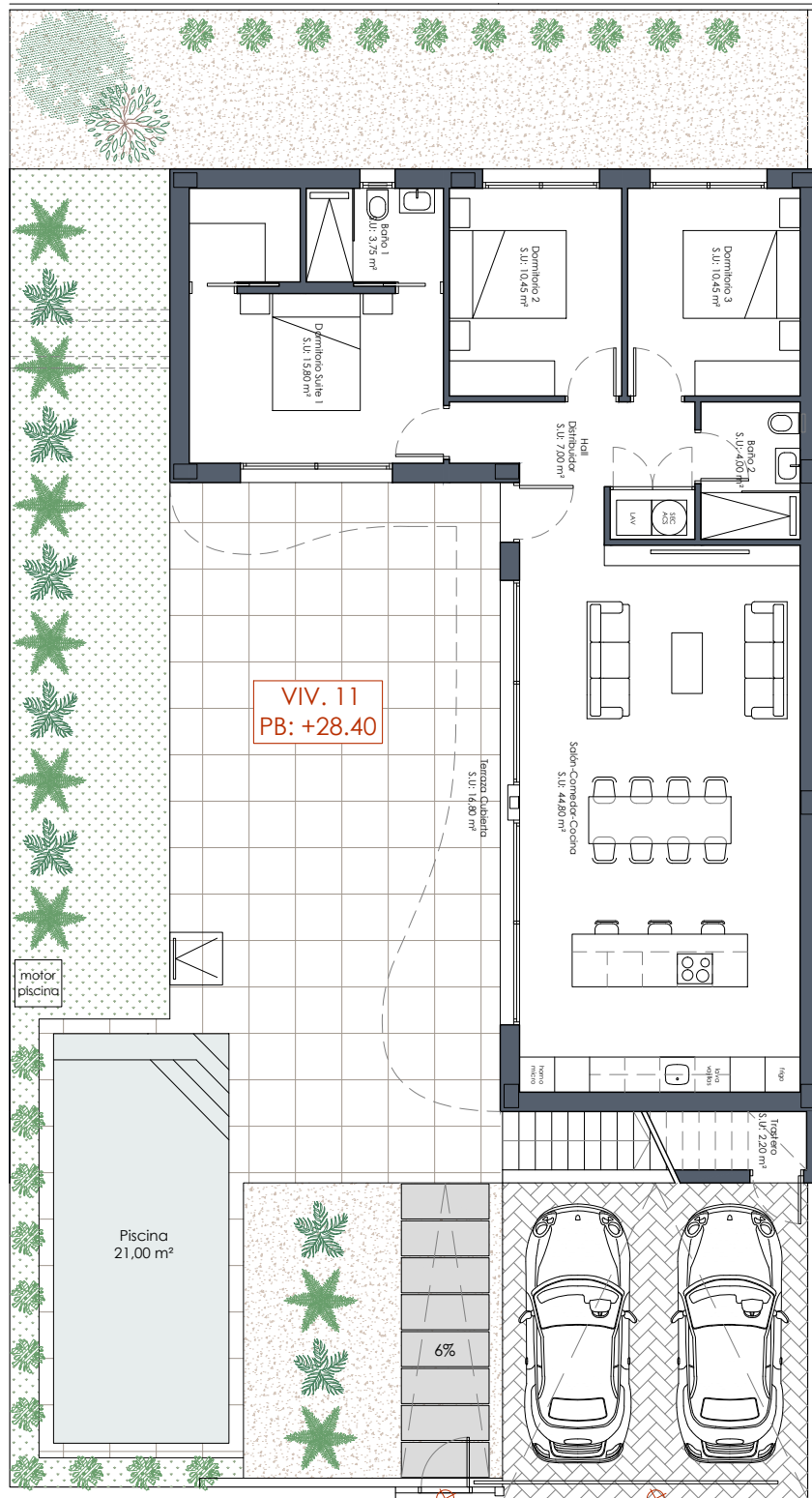
Vivienda 9	
Sup. Parcela	352,49 m2
Sup. Construida P. Baja	124,85 m2
Sup. Construida P. Terraza	16,80 m2
Sup. Construida P. Solarium	94,00 m2
Sup. Construida TOTAL	235,65 m2
Sup. Piscina	3x7 m



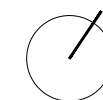
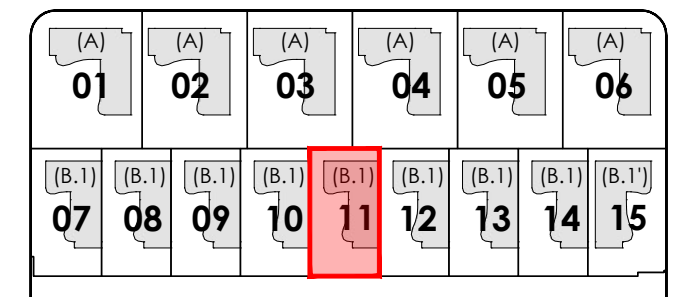


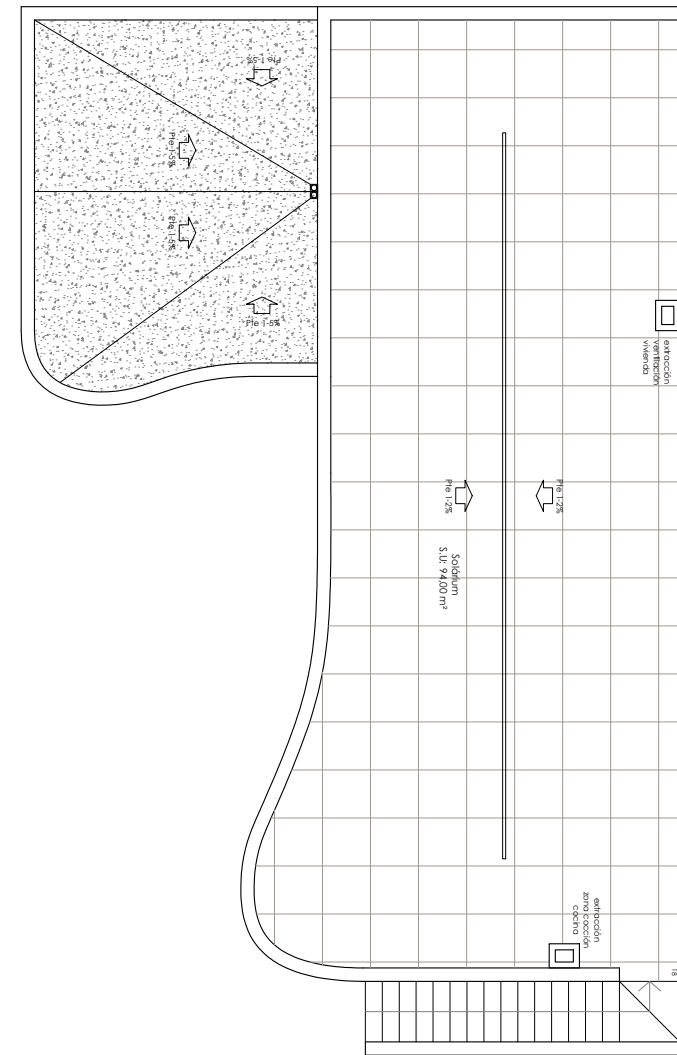
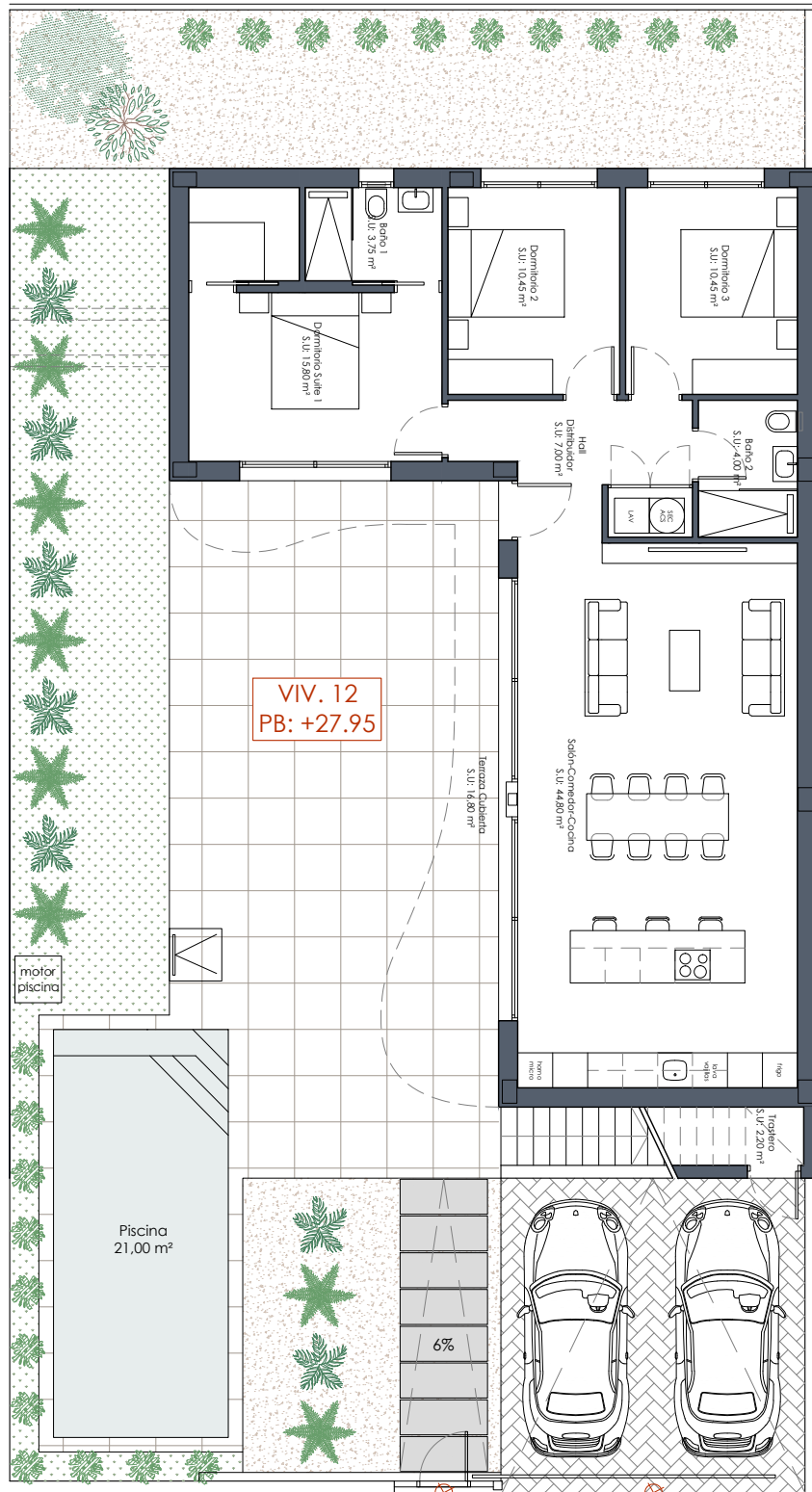
Vivienda 10	
Sup. Parcela	352,49 m2
Sup. Construida P. Baja	124,85 m2
Sup. Construida P. Terraza	16,80 m2
Sup. Construida P. Solarium	94,00 m2
Sup. Construida TOTAL	235,65 m2
Sup. Piscina	3x7 m



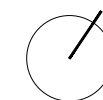
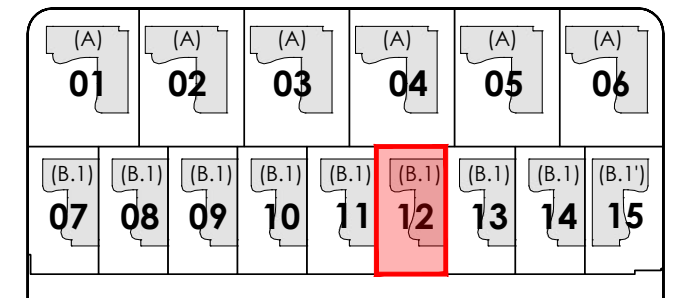


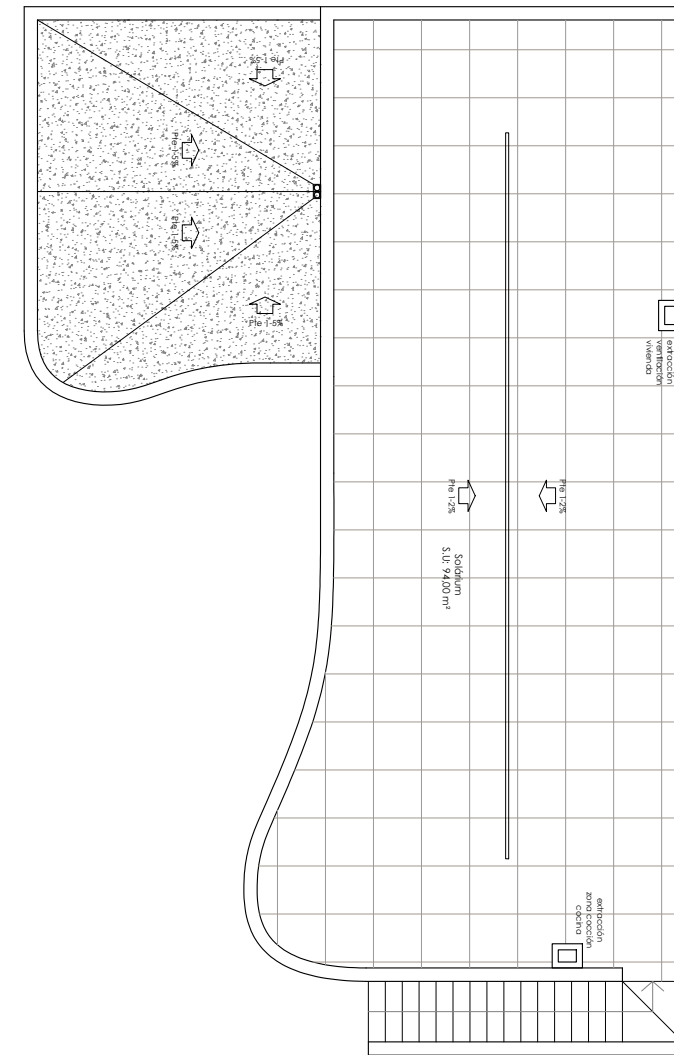
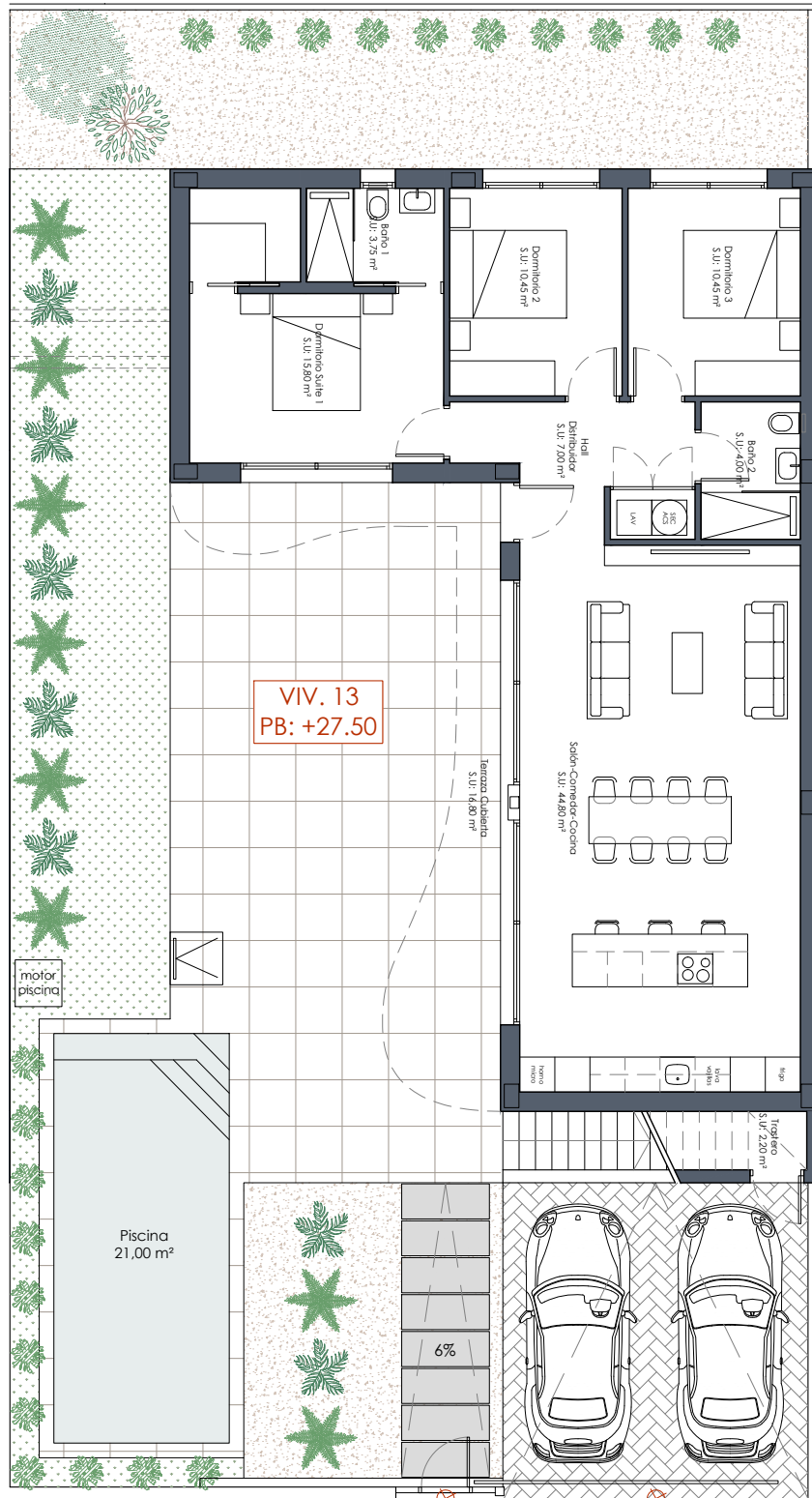
Vivienda 11	
Sup. Parcela	352,49 m2
Sup. Construida P. Baja	124,85 m2
Sup. Construida P. Terraza	16,80 m2
Sup. Construida P. Solarium	94,00 m2
Sup. Construida TOTAL	235,65 m2
Sup. Piscina	3x7 m





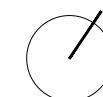
Vivienda 12	
Sup. Parcela	352,49 m2
Sup. Construida P. Baja	124,85 m2
Sup. Construida P. Terraza	16,80 m2
Sup. Construida P. Solarium	94,00 m2
Sup. Construida TOTAL	235,65 m2
Sup. Piscina	3x7 m

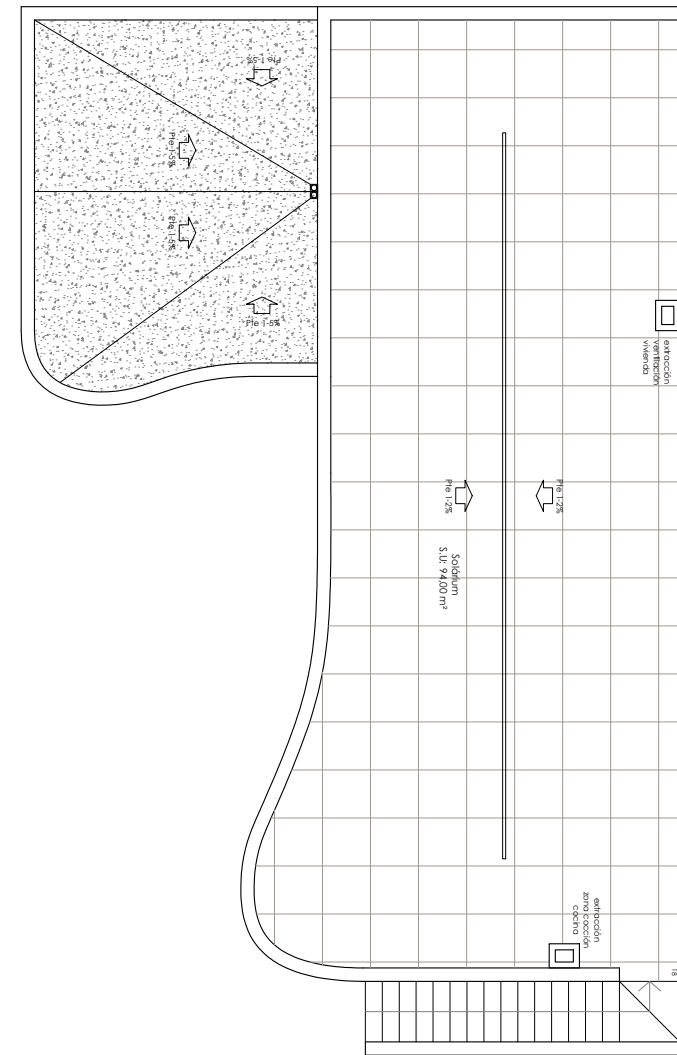
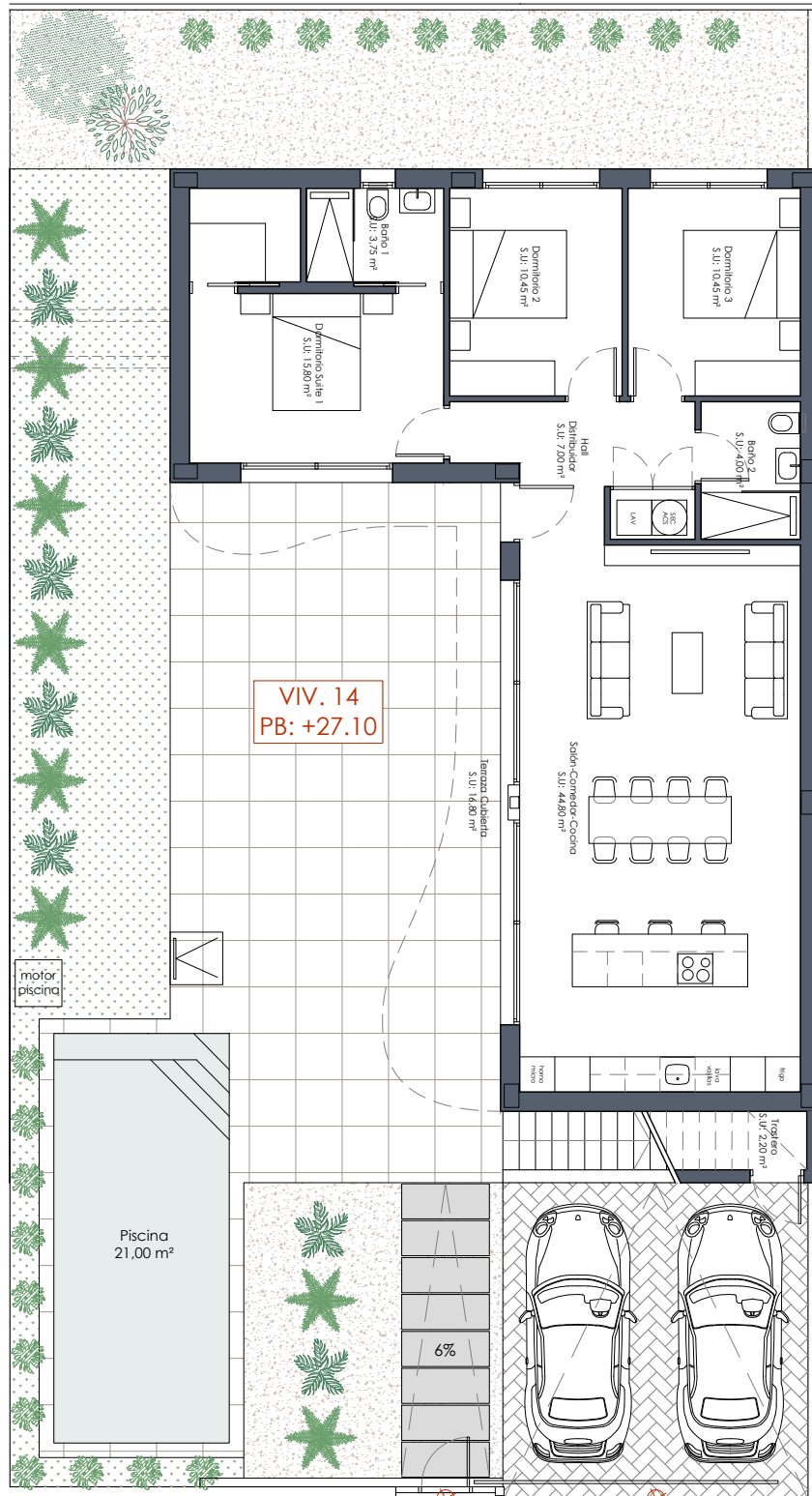




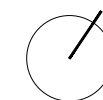
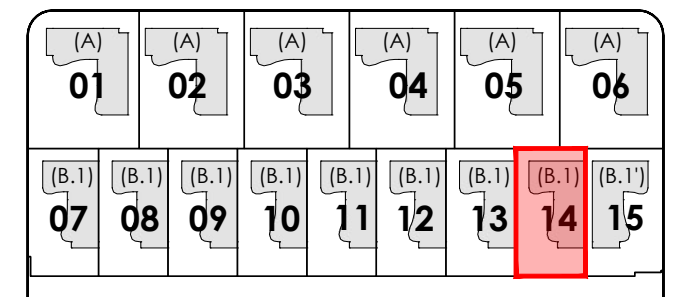
Vivienda 13	
Sup. Parcela	352,49 m ²
Sup. Construida P. Baja	124,85 m ²
Sup. Construida P. Terraza	16,80 m ²
Sup. Construida P. Solarium	94,00 m ²
Sup. Construida TOTAL	235,65 m ²
Sup. Piscina	3x7 m

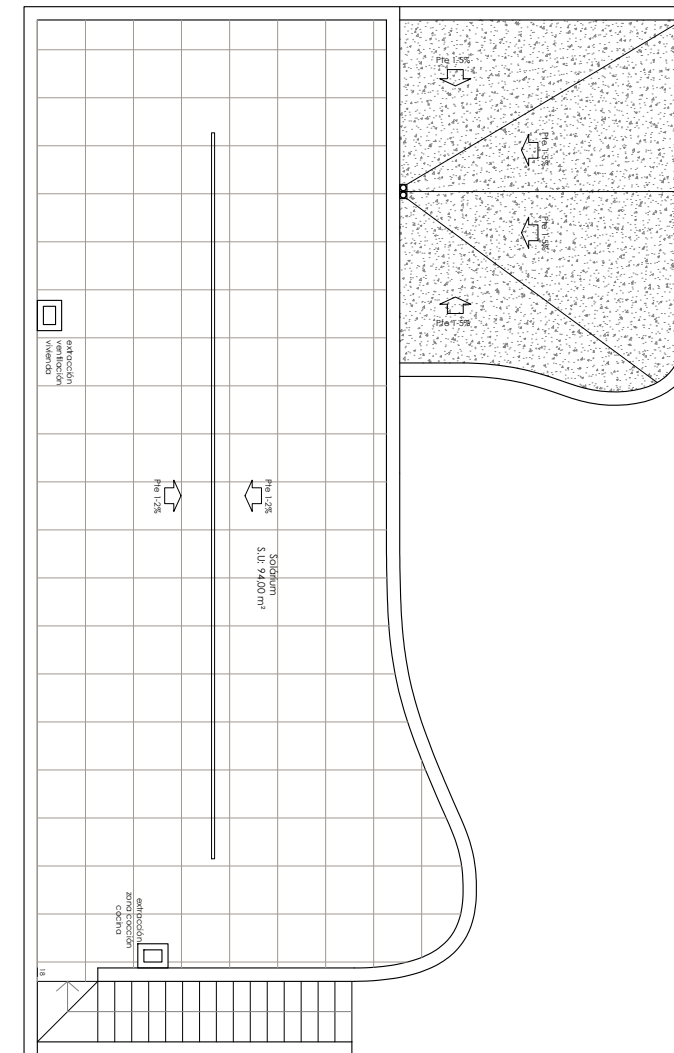
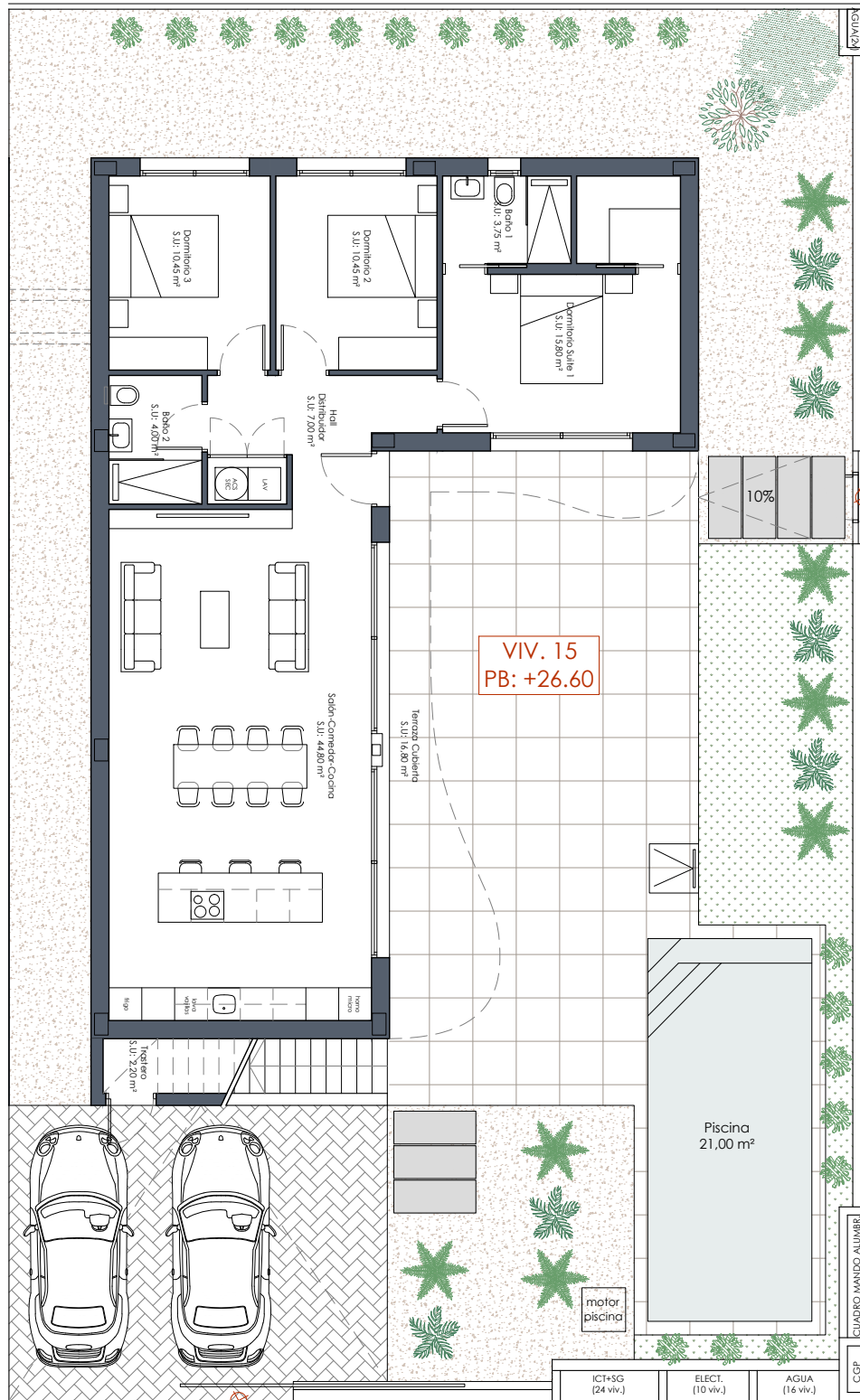
(A)	(A)	(A)	(A)	(A)	(A)	(A)	(A)	(A)
01	02	03	04	05	06			
(B.1)	(B.1)	(B.1)	(B.1)	(B.1)	(B.1)	(B.1)	(B.1)	(B.1)
07	08	09	10	11	12	13	14	15





Vivienda 14	
Sup. Parcela	352,49 m2
Sup. Construida P. Baja	124,85 m2
Sup. Construida P. Terraza	16,80 m2
Sup. Construida P. Solarium	94,00 m2
Sup. Construida TOTAL	235,65 m2
Sup. Piscina	3x7 m





Vivienda 15	
Sup. Parcela	393,95 m2
Sup. Construida P. Baja	124,85 m2
Sup. Construida P. Terraza	16,80 m2
Sup. Construida P. Solarium	94,00 m2
Sup. Construida TOTAL	235,65 m2
Sup. Piscina	3x7 m

(A)	(A)	(A)	(A)	(A)	(A)	(A)	(A)	(A)
01	02	03	04	05	06			
(B.1)	(B.1)	(B.1)	(B.1)	(B.1)	(B.1)	(B.1)	(B.1)	(B.1)
07	08	09	10	11	12	13	14	15

15 VIVIENDAS UNIFAMILIARES - Lo Marabú

